

Form **8879-EO**

IRS e-file Signature Authorization for an Exempt Organization

OMB No. 1545-1878

For calendar year 2017, or fiscal year beginning _____, 2017, and ending _____, 20____

2017

Department of the Treasury
Internal Revenue Service

▶ Do not send to the IRS. Keep for your records.
▶ Go to www.irs.gov/Form8879EO for the latest information.

Name of exempt organization

Employer identification number

Transgender Law Center
Name and title of officer

05-0544006

Kris Hayashi Executive Director

Part I Type of Return and Return Information (Whole Dollars Only)

Check the box for the return for which you are using this Form 8879-EO and enter the applicable amount, if any, from the return. If you check the box on line 1a, 2a, 3a, 4a, or 5a, below, and the amount on that line for the return being filed with this form was blank, then leave line 1b, 2b, 3b, 4b, or 5b, whichever is applicable, blank (do not enter -0-). But, if you entered -0- on the return, then enter -0- on the applicable line below. Do not complete more than one line in Part I.

1 a	Form 990 check here	▶	<input checked="" type="checkbox"/>	b	Total revenue, if any (Form 990, Part VIII, column (A), line 12)	1 b	<u>5,177,871.</u>
2 a	Form 990-EZ check here	▶	<input type="checkbox"/>	b	Total revenue, if any (Form 990-EZ, line 9)	2 b	_____
3 a	Form 1120-POL check here	▶	<input type="checkbox"/>	b	Total tax (Form 1120-POL, line 22)	3 b	_____
4 a	Form 990-PF check here	▶	<input type="checkbox"/>	b	Tax based on investment income (Form 990-PF, Part VI, line 5)	4 b	_____
5 a	Form 8868 check here	▶	<input type="checkbox"/>	b	Balance Due (Form 8868, line 3c)	5 b	_____

Part II Declaration and Signature Authorization of Officer

Under penalties of perjury, I declare that I am an officer of the above organization and that I have examined a copy of the organization's 2017 electronic return and accompanying schedules and statements and to the best of my knowledge and belief, they are true, correct, and complete. I further declare that the amount in Part I above is the amount shown on the copy of the organization's electronic return. I consent to allow my intermediate service provider, transmitter, or electronic return originator (ERO) to send the organization's return to the IRS and to receive from the IRS (a) an acknowledgement of receipt or reason for rejection of the transmission, (b) the reason for any delay in processing the return or refund, and (c) the date of any refund. If applicable, I authorize the U.S. Treasury and its designated Financial Agent to initiate an electronic funds withdrawal (direct debit) entry to the financial institution account indicated in the tax preparation software for payment of the organization's federal taxes owed on this return, and the financial institution to debit the entry to this account. To revoke a payment, I must contact the U.S. Treasury Financial Agent at 1-888-353-4537 no later than 2 business days prior to the payment (settlement) date. I also authorize the financial institutions involved in the processing of the electronic payment of taxes to receive confidential information necessary to answer inquiries and resolve issues related to the payment. I have selected a personal identification number (PIN) as my signature for the organization's electronic return and, if applicable, the organization's consent to electronic funds withdrawal.

Officer's PIN: check one box only

I authorize Cook & Company, A Prof. Actncy. Corp. to enter my PIN 36284 as my signature
ERO firm name Enter five numbers, but do not enter all zeros

on the organization's tax year 2017 electronically filed return. If I have indicated within this return that a copy of the return is being filed with a state agency(ies) regulating charities as part of the IRS Fed/State program, I also authorize the aforementioned ERO to enter my PIN on the return's disclosure consent screen.

As an officer of the organization, I will enter my PIN as my signature on the organization's tax year 2017 electronically filed return. If I have indicated within this return that a copy of the return is being filed with a state agency(ies) regulating charities as part of the IRS Fed/State program, I will enter my PIN on the return's disclosure consent screen.

Officer's signature ▶ *Kris Hayashi* Date ▶ 05/24/2019

Part III Certification and Authentication

ERO's EFIN/PIN. Enter your six-digit electronic filing identification number (EFIN) followed by your five-digit self-selected PIN 94582294110
Do not enter all zeros

I certify that the above numeric entry is my PIN, which is my signature on the 2017 electronically filed return for the organization indicated above. I confirm that I am submitting this return in accordance with the requirements of Pub. 4163, Modernized e-File (MeF) Information for Authorized IRS e-file Providers for Business Returns.

ERO's signature ▶ *Douglas E. Cook* Date ▶ 05/03/2019

**ERO Must Retain This Form – See Instructions
Do Not Submit This Form to the IRS Unless Requested To Do So**

BAA For Paperwork Reduction Act Notice, see instructions.

Form **8879-EO** (2017)

Signature Certificate



Document Reference: P46G2BIPJJXB5MM6YUY3L9

RightSignature
Easy Online Document Signing



Kris Hayashi

Party ID: 5SBNYUIS92NRCU3LZ9MBXV

IP Address: 12.161.174.149

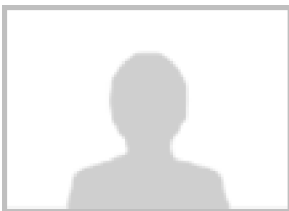
VERIFIED EMAIL: kris@transgenderlawcenter.org

Electronic Signature:

kris hayashi

Multi-Factor
Digital Fingerprint Checksum

c00710309918cf0f7c0e72c5e745ff5cfd50a955



Douglas Cook

Party ID: PLZTXBJYN5HJAW4SMUYKI8

IP Address: 72.87.249.34

VERIFIED EMAIL: dc@cookandcompanycpa.com

Electronic Signature:

Douglas Cook

Multi-Factor
Digital Fingerprint Checksum

4a957056eb6b90a1d01d21fc3b53210be79fcd87



Timestamp

2019-05-24 16:10:38 -0700

2019-05-24 16:10:38 -0700

2019-05-03 16:30:14 -0700

2019-05-03 13:34:32 -0700

2019-05-03 12:57:35 -0700

2019-05-02 13:36:13 -0700

Audit

All parties have signed document. Signed copies sent to: Kelsey Branstetter, Kris Hayashi, and Douglas Cook.

Document signed by Kris Hayashi (kris@transgenderlawcenter.org) with drawn signature. - 12.161.174.149

Document viewed by Kris Hayashi (kris@transgenderlawcenter.org). - 12.161.174.149

Document signed by Douglas Cook (dc@cookandcompanycpa.com) with drawn signature. - 72.87.249.34

Document viewed by Douglas Cook (dc@cookandcompanycpa.com). - 72.87.249.34

Document created by Kelsey Branstetter (admin@cookandcompanycpa.com). - 72.87.249.34



This signature page provides a record of the online activity executing this contract.

Return of Organization Exempt From Income Tax

2017

Under section 501(c), 527, or 4947(a)(1) of the Internal Revenue Code (except private foundations)
 ▶ Do not enter social security numbers on this form as it may be made public.
 ▶ Go to www.irs.gov/Form990 for instructions and the latest information.

Open to Public Inspection

Department of the Treasury
Internal Revenue Service

A For the 2017 calendar year, or tax year beginning , 2017, and ending ,

B Check if applicable:	C	D Employer identification number	
<input type="checkbox"/> Address change	Transgender Law Center PO BOX 70976 Oakland, CA 94612	05-0544006	
<input type="checkbox"/> Name change		E Telephone number	
<input type="checkbox"/> Initial return		510-587-9696	
<input type="checkbox"/> Final return/terminated		G Gross receipts \$	5,427,449.
<input checked="" type="checkbox"/> Amended return	F Name and address of principal officer: Kris Hayashi	H(a) Is this a group return for subordinates? <input type="checkbox"/> Yes <input checked="" type="checkbox"/> No	
<input type="checkbox"/> Application pending	Same As C Above	H(b) Are all subordinates included? <input type="checkbox"/> Yes <input type="checkbox"/> No	
		If 'No,' attach a list. (see instructions)	
I Tax-exempt status	<input checked="" type="checkbox"/> 501(c)(3) <input type="checkbox"/> 501(c) () (insert no.) <input type="checkbox"/> 4947(a)(1) or <input type="checkbox"/> 527	H(c) Group exemption number ▶	
J Website: ▶	www.transgenderlawcenter.org		
K Form of organization: <input checked="" type="checkbox"/> Corporation <input type="checkbox"/> Trust <input type="checkbox"/> Association <input type="checkbox"/> Other ▶	L Year of formation: 2005	M State of legal domicile: CA	

Part I Summary

1	Briefly describe the organization's mission or most significant activities: <u>Transgender Law Center TLC changes law, policy and attitudes so that all people can live safely, authentically, and free from discrimination regardless of their gender identity or expression.</u>		
2	Check this box <input type="checkbox"/> if the organization discontinued its operations or disposed of more than 25% of its net assets.		
3	Number of voting members of the governing body (Part VI, line 1a)	3	13
4	Number of independent voting members of the governing body (Part VI, line 1b)	4	13
5	Total number of individuals employed in calendar year 2017 (Part V, line 2a)	5	36
6	Total number of volunteers (estimate if necessary)	6	30
7a	Total unrelated business revenue from Part VIII, column (C), line 12	7a	0.
b	Net unrelated business taxable income from Form 990-T, line 34	7b	0.
8	Contributions and grants (Part VIII, line 1h)	Prior Year	Current Year
9	Program service revenue (Part VIII, line 2g)	2,870,196.	4,845,084.
10	Investment income (Part VIII, column (A), lines 3, 4, and 7d)	196,045.	222,426.
11	Other revenue (Part VIII, column (A), lines 5, 6d, 8c, 9c, 10c, and 11e)	23,364.	21,937.
12	Total revenue – add lines 8 through 11 (must equal Part VIII, column (A), line 12)	-25,685.	88,424.
13	Grants and similar amounts paid (Part IX, column (A), lines 1-3)	3,063,920.	5,177,871.
14	Benefits paid to or for members (Part IX, column (A), line 4)		22,398.
15	Salaries, other compensation, employee benefits (Part IX, column (A), lines 5-10)		
16a	Professional fundraising fees (Part IX, column (A), line 11e)	1,681,958.	2,094,066.
b	Total fundraising expenses (Part IX, column (D), line 25) ▶ 465,765.	94,385.	28,699.
17	Other expenses (Part IX, column (A), lines 11a-11d, 11f-24e)	1,565,419.	1,768,936.
18	Total expenses. Add lines 13-17 (must equal Part IX, column (A), line 25)	3,341,762.	3,914,099.
19	Revenue less expenses. Subtract line 18 from line 12	-277,842.	1,263,772.
20	Total assets (Part X, line 16)	Beginning of Current Year	End of Year
21	Total liabilities (Part X, line 26)	2,038,983.	3,529,410.
22	Net assets or fund balances. Subtract line 21 from line 20	289,592.	394,980.
		1,749,391.	3,134,430.

Part II Signature Block

Under penalties of perjury, I declare that I have examined this return, including accompanying schedules and statements, and to the best of my knowledge and belief, it is true, correct, and complete. Declaration of preparer (other than officer) is based on all information of which preparer has any knowledge.

Sign Here	Signature of officer	Date	
	<u>Kris Hayashi</u> Type or print name and title	Executive Director	
Paid Preparer Use Only	Print/Type preparer's name	Preparer's signature	Date
	Douglas E. Cook, CPA/MPA	Douglas E. Cook, CPA/MPA	
	Firm's name ▶ Cook & Company, A Prof. Actncy. Corp.	Check <input type="checkbox"/> if self-employed	PTIN P01521705
	Firm's address ▶ 870 Market Street, Suite 880 San Francisco, CA 94102	Firm's EIN ▶ 47-2626541	Phone no. 415-621-1112

May the IRS discuss this return with the preparer shown above? (see instructions) Yes No

Part III Statement of Program Service Accomplishments

Check if Schedule O contains a response or note to any line in this Part III [X]

1 Briefly describe the organization's mission:

Transgender Law Center TLC changes law, policy and attitudes so that all people can live safely, authentically, and free from discrimination regardless of their gender identity or expression.

2 Did the organization undertake any significant program services during the year which were not listed on the prior Form 990 or 990-EZ? [] Yes [X] No

3 Did the organization cease conducting, or make significant changes in how it conducts, any program services? [] Yes [X] No

4 Describe the organization's program service accomplishments for each of its three largest program services, as measured by expenses. Section 501(c)(3) and 501(c)(4) organizations are required to report the amount of grants and allocations to others, the total expenses, and revenue, if any, for each program service reported.

4a (Code:) (Expenses \$ 1,263,695. including grants of \$ 22,398.) (Revenue \$ 36,156.)

See Schedule O

4b (Code:) (Expenses \$ 765,712. including grants of \$) (Revenue \$ 81,846.)

See Schedule O

4c (Code:) (Expenses \$ 611,548. including grants of \$) (Revenue \$ 104,124.)

See Schedule O

4d Other program services (Describe in Schedule O.) See Schedule O (Expenses \$ 572,938. including grants of \$) (Revenue \$ 300.)

4e Total program service expenses 3,213,893.

Part IV Checklist of Required Schedules

	Yes	No
1 Is the organization described in section 501(c)(3) or 4947(a)(1) (other than a private foundation)? <i>If 'Yes,' complete Schedule A.</i>	X	
2 Is the organization required to complete <i>Schedule B, Schedule of Contributors</i> (see instructions)?	X	
3 Did the organization engage in direct or indirect political campaign activities on behalf of or in opposition to candidates for public office? <i>If 'Yes,' complete Schedule C, Part I.</i>		X
4 Section 501(c)(3) organizations. Did the organization engage in lobbying activities, or have a section 501(h) election in effect during the tax year? <i>If 'Yes,' complete Schedule C, Part II.</i>	X	
5 Is the organization a section 501(c)(4), 501(c)(5), or 501(c)(6) organization that receives membership dues, assessments, or similar amounts as defined in Revenue Procedure 98-19? <i>If 'Yes,' complete Schedule C, Part III.</i>		X
6 Did the organization maintain any donor advised funds or any similar funds or accounts for which donors have the right to provide advice on the distribution or investment of amounts in such funds or accounts? <i>If 'Yes,' complete Schedule D, Part I.</i>		X
7 Did the organization receive or hold a conservation easement, including easements to preserve open space, the environment, historic land areas, or historic structures? <i>If 'Yes,' complete Schedule D, Part II.</i>		X
8 Did the organization maintain collections of works of art, historical treasures, or other similar assets? <i>If 'Yes,' complete Schedule D, Part III.</i>		X
9 Did the organization report an amount in Part X, line 21, for escrow or custodial account liability, serve as a custodian for amounts not listed in Part X; or provide credit counseling, debt management, credit repair, or debt negotiation services? <i>If 'Yes,' complete Schedule D, Part IV.</i>		X
10 Did the organization, directly or through a related organization, hold assets in temporarily restricted endowments, permanent endowments, or quasi-endowments? <i>If 'Yes,' complete Schedule D, Part V.</i>		X
11 If the organization's answer to any of the following questions is 'Yes,' then complete Schedule D, Parts VI, VII, VIII, IX, or X as applicable.		
a Did the organization report an amount for land, buildings, and equipment in Part X, line 10? <i>If 'Yes,' complete Schedule D, Part VI.</i>	X	
b Did the organization report an amount for investments – other securities in Part X, line 12 that is 5% or more of its total assets reported in Part X, line 16? <i>If 'Yes,' complete Schedule D, Part VII.</i>		X
c Did the organization report an amount for investments – program related in Part X, line 13 that is 5% or more of its total assets reported in Part X, line 16? <i>If 'Yes,' complete Schedule D, Part VIII.</i>		X
d Did the organization report an amount for other assets in Part X, line 15 that is 5% or more of its total assets reported in Part X, line 16? <i>If 'Yes,' complete Schedule D, Part IX.</i>		X
e Did the organization report an amount for other liabilities in Part X, line 25? <i>If 'Yes,' complete Schedule D, Part X.</i>	X	
f Did the organization's separate or consolidated financial statements for the tax year include a footnote that addresses the organization's liability for uncertain tax positions under FIN 48 (ASC 740)? <i>If 'Yes,' complete Schedule D, Part X.</i>		X
12a Did the organization obtain separate, independent audited financial statements for the tax year? <i>If 'Yes,' complete Schedule D, Parts XI and XII.</i>	X	
b Was the organization included in consolidated, independent audited financial statements for the tax year? <i>If 'Yes,' and if the organization answered 'No' to line 12a, then completing Schedule D, Parts XI and XII is optional.</i>		X
13 Is the organization a school described in section 170(b)(1)(A)(ii)? <i>If 'Yes,' complete Schedule E.</i>		X
14a Did the organization maintain an office, employees, or agents outside of the United States?		X
b Did the organization have aggregate revenues or expenses of more than \$10,000 from grantmaking, fundraising, business, investment, and program service activities outside the United States, or aggregate foreign investments valued at \$100,000 or more? <i>If 'Yes,' complete Schedule F, Parts I and IV.</i>		X
15 Did the organization report on Part IX, column (A), line 3, more than \$5,000 of grants or other assistance to or for any foreign organization? <i>If 'Yes,' complete Schedule F, Parts II and IV.</i>		X
16 Did the organization report on Part IX, column (A), line 3, more than \$5,000 of aggregate grants or other assistance to or for foreign individuals? <i>If 'Yes,' complete Schedule F, Parts III and IV.</i>		X
17 Did the organization report a total of more than \$15,000 of expenses for professional fundraising services on Part IX, column (A), lines 6 and 11e? <i>If 'Yes,' complete Schedule G, Part I</i> (see instructions).	X	
18 Did the organization report more than \$15,000 total of fundraising event gross income and contributions on Part VIII, lines 1c and 8a? <i>If 'Yes,' complete Schedule G, Part II.</i>	X	
19 Did the organization report more than \$15,000 of gross income from gaming activities on Part VIII, line 9a? <i>If 'Yes,' complete Schedule G, Part III.</i>		X

Part IV Checklist of Required Schedules (continued)

	Yes	No
20a Did the organization operate one or more hospital facilities? <i>If 'Yes,' complete Schedule H.</i>		X
b If 'Yes' to line 20a, did the organization attach a copy of its audited financial statements to this return?		
21 Did the organization report more than \$5,000 of grants or other assistance to any domestic organization or domestic government on Part IX, column (A), line 1? <i>If 'Yes,' complete Schedule I, Parts I and II.</i>	X	
22 Did the organization report more than \$5,000 of grants or other assistance to or for domestic individuals on Part IX, column (A), line 2? <i>If 'Yes,' complete Schedule I, Parts I and III.</i>		X
23 Did the organization answer 'Yes' to Part VII, Section A, line 3, 4, or 5 about compensation of the organization's current and former officers, directors, trustees, key employees, and highest compensated employees? <i>If 'Yes,' complete Schedule J.</i>		X
24a Did the organization have a tax-exempt bond issue with an outstanding principal amount of more than \$100,000 as of the last day of the year, that was issued after December 31, 2002? <i>If 'Yes,' answer lines 24b through 24d and complete Schedule K. If 'No,' go to line 25a.</i>		X
b Did the organization invest any proceeds of tax-exempt bonds beyond a temporary period exception?		
c Did the organization maintain an escrow account other than a refunding escrow at any time during the year to defease any tax-exempt bonds?		
d Did the organization act as an 'on behalf of' issuer for bonds outstanding at any time during the year?		
25a Section 501(c)(3), 501(c)(4), and 501(c)(29) organizations. Did the organization engage in an excess benefit transaction with a disqualified person during the year? <i>If 'Yes,' complete Schedule L, Part I.</i>		X
b Is the organization aware that it engaged in an excess benefit transaction with a disqualified person in a prior year, and that the transaction has not been reported on any of the organization's prior Forms 990 or 990-EZ? <i>If 'Yes,' complete Schedule L, Part I.</i>		X
26 Did the organization report any amount on Part X, line 5, 6, or 22 for receivables from or payables to any current or former officers, directors, trustees, key employees, highest compensated employees, or disqualified persons? <i>If 'Yes,' complete Schedule L, Part II.</i>		X
27 Did the organization provide a grant or other assistance to an officer, director, trustee, key employee, substantial contributor or employee thereof, a grant selection committee member, or to a 35% controlled entity or family member of any of these persons? <i>If 'Yes,' complete Schedule L, Part III.</i>		X
28 Was the organization a party to a business transaction with one of the following parties (see Schedule L, Part IV instructions for applicable filing thresholds, conditions, and exceptions):		
a A current or former officer, director, trustee, or key employee? <i>If 'Yes,' complete Schedule L, Part IV.</i>		X
b A family member of a current or former officer, director, trustee, or key employee? <i>If 'Yes,' complete Schedule L, Part IV.</i>		X
c An entity of which a current or former officer, director, trustee, or key employee (or a family member thereof) was an officer, director, trustee, or direct or indirect owner? <i>If 'Yes,' complete Schedule L, Part IV.</i>		X
29 Did the organization receive more than \$25,000 in non-cash contributions? <i>If 'Yes,' complete Schedule M.</i>	X	
30 Did the organization receive contributions of art, historical treasures, or other similar assets, or qualified conservation contributions? <i>If 'Yes,' complete Schedule M.</i>		X
31 Did the organization liquidate, terminate, or dissolve and cease operations? <i>If 'Yes,' complete Schedule N, Part I.</i>		X
32 Did the organization sell, exchange, dispose of, or transfer more than 25% of its net assets? <i>If 'Yes,' complete Schedule N, Part II.</i>		X
33 Did the organization own 100% of an entity disregarded as separate from the organization under Regulations sections 301.7701-2 and 301.7701-3? <i>If 'Yes,' complete Schedule R, Part I.</i>		X
34 Was the organization related to any tax-exempt or taxable entity? <i>If 'Yes,' complete Schedule R, Part II, III, or IV, and Part V, line 1.</i>		X
35a Did the organization have a controlled entity within the meaning of section 512(b)(13)?		X
b If 'Yes' to line 35a, did the organization receive any payment from or engage in any transaction with a controlled entity within the meaning of section 512(b)(13)? <i>If 'Yes,' complete Schedule R, Part V, line 2.</i>		
36 Section 501(c)(3) organizations. Did the organization make any transfers to an exempt non-charitable related organization? <i>If 'Yes,' complete Schedule R, Part V, line 2.</i>		X
37 Did the organization conduct more than 5% of its activities through an entity that is not a related organization and that is treated as a partnership for federal income tax purposes? <i>If 'Yes,' complete Schedule R, Part VI.</i>		X
38 Did the organization complete Schedule O and provide explanations in Schedule O for Part VI, lines 11b and 19? Note. All Form 990 filers are required to complete Schedule O.	X	

BAA

Form **990** (2017)

Part V Statements Regarding Other IRS Filings and Tax Compliance

Check if Schedule O contains a response or note to any line in this Part V

		Yes	No
1 a	Enter the number reported in Box 3 of Form 1096. Enter -0- if not applicable. <input type="text" value="59"/>		
1 b	Enter the number of Forms W-2G included in line 1a. Enter -0- if not applicable. <input type="text" value="0"/>		
1 c	Did the organization comply with backup withholding rules for reportable payments to vendors and reportable gaming (gambling) winnings to prize winners? <input type="checkbox"/>	X	
2 a	Enter the number of employees reported on Form W-3, Transmittal of Wage and Tax Statements, filed for the calendar year ending with or within the year covered by this return. <input type="text" value="36"/>		
2 b	If at least one is reported on line 2a, did the organization file all required federal employment tax returns? <input type="checkbox"/>	X	
Note. If the sum of lines 1a and 2a is greater than 250, you may be required to e-file (see instructions)			
3 a	Did the organization have unrelated business gross income of \$1,000 or more during the year? <input type="checkbox"/>		X
3 b	If 'Yes,' has it filed a Form 990-T for this year? If 'No' to line 3b, provide an explanation in Schedule O. <input type="checkbox"/>		
4 a	At any time during the calendar year, did the organization have an interest in, or a signature or other authority over, a financial account in a foreign country (such as a bank account, securities account, or other financial account)? <input type="checkbox"/>		X
4 b	If 'Yes,' enter the name of the foreign country: <input type="text"/> See instructions for filing requirements for FinCEN Form 114, Report of Foreign Bank and Financial Accounts (FBAR).		
5 a	Was the organization a party to a prohibited tax shelter transaction at any time during the tax year? <input type="checkbox"/>		X
5 b	Did any taxable party notify the organization that it was or is a party to a prohibited tax shelter transaction? <input type="checkbox"/>		X
5 c	If 'Yes,' to line 5a or 5b, did the organization file Form 8886-T? <input type="checkbox"/>		
6 a	Does the organization have annual gross receipts that are normally greater than \$100,000, and did the organization solicit any contributions that were not tax deductible as charitable contributions? <input type="checkbox"/>		X
6 b	If 'Yes,' did the organization include with every solicitation an express statement that such contributions or gifts were not tax deductible? <input type="checkbox"/>		
7	Organizations that may receive deductible contributions under section 170(c).		
7 a	Did the organization receive a payment in excess of \$75 made partly as a contribution and partly for goods and services provided to the payor? <input type="checkbox"/>	X	
7 b	If 'Yes,' did the organization notify the donor of the value of the goods or services provided? <input type="checkbox"/>	X	
7 c	Did the organization sell, exchange, or otherwise dispose of tangible personal property for which it was required to file Form 8282? <input type="checkbox"/>		X
7 d	If 'Yes,' indicate the number of Forms 8282 filed during the year. <input type="text"/>		
7 e	Did the organization receive any funds, directly or indirectly, to pay premiums on a personal benefit contract? <input type="checkbox"/>		X
7 f	Did the organization, during the year, pay premiums, directly or indirectly, on a personal benefit contract? <input type="checkbox"/>		X
7 g	If the organization received a contribution of qualified intellectual property, did the organization file Form 8899 as required? <input type="checkbox"/>		
7 h	If the organization received a contribution of cars, boats, airplanes, or other vehicles, did the organization file a Form 1098-C? <input type="checkbox"/>		
8	Sponsoring organizations maintaining donor advised funds. Did a donor advised fund maintained by the sponsoring organization have excess business holdings at any time during the year? <input type="checkbox"/>		
9	Sponsoring organizations maintaining donor advised funds.		
9 a	Did the sponsoring organization make any taxable distributions under section 4966? <input type="checkbox"/>		
9 b	Did the sponsoring organization make a distribution to a donor, donor advisor, or related person? <input type="checkbox"/>		
10	Section 501(c)(7) organizations. Enter:		
10 a	Initiation fees and capital contributions included on Part VIII, line 12. <input type="text"/>		
10 b	Gross receipts, included on Form 990, Part VIII, line 12, for public use of club facilities. <input type="text"/>		
11	Section 501(c)(12) organizations. Enter:		
11 a	Gross income from members or shareholders. <input type="text"/>		
11 b	Gross income from other sources (Do not net amounts due or paid to other sources against amounts due or received from them.) <input type="text"/>		
12 a	Section 4947(a)(1) non-exempt charitable trusts. Is the organization filing Form 990 in lieu of Form 1041? <input type="checkbox"/>		
12 b	If 'Yes,' enter the amount of tax-exempt interest received or accrued during the year. <input type="text"/>		
13	Section 501(c)(29) qualified nonprofit health insurance issuers.		
13 a	Is the organization licensed to issue qualified health plans in more than one state? <input type="checkbox"/>		
Note. See the instructions for additional information the organization must report on Schedule O.			
13 b	Enter the amount of reserves the organization is required to maintain by the states in which the organization is licensed to issue qualified health plans. <input type="text"/>		
13 c	Enter the amount of reserves on hand. <input type="text"/>		
14 a	Did the organization receive any payments for indoor tanning services during the tax year? <input type="checkbox"/>		X
14 b	If 'Yes,' has it filed a Form 720 to report these payments? If 'No,' provide an explanation in Schedule O. <input type="checkbox"/>		

Part VI Governance, Management, and Disclosure For each 'Yes' response to lines 2 through 7b below, and for a 'No' response to line 8a, 8b, or 10b below, describe the circumstances, processes, or changes in Schedule O. See instructions.

Check if Schedule O contains a response or note to any line in this Part VI.

Section A. Governing Body and Management

		Yes	No
1 a	Enter the number of voting members of the governing body at the end of the tax year. 1 a 13 If there are material differences in voting rights among members of the governing body, or if the governing body delegated broad authority to an executive committee or similar committee, explain in Schedule O.		
1 b	Enter the number of voting members included in line 1a, above, who are independent. 1 b 13		
2	Did any officer, director, trustee, or key employee have a family relationship or a business relationship with any other officer, director, trustee, or key employee?		X
3	Did the organization delegate control over management duties customarily performed by or under the direct supervision of officers, directors, or trustees, or key employees to a management company or other person?		X
4	Did the organization make any significant changes to its governing documents since the prior Form 990 was filed?		X
5	Did the organization become aware during the year of a significant diversion of the organization's assets?		X
6	Did the organization have members or stockholders?		X
7 a	Did the organization have members, stockholders, or other persons who had the power to elect or appoint one or more members of the governing body?		X
7 b	Are any governance decisions of the organization reserved to (or subject to approval by) members, stockholders, or persons other than the governing body?		X
8	Did the organization contemporaneously document the meetings held or written actions undertaken during the year by the following:		
8 a	The governing body?	X	
8 b	Each committee with authority to act on behalf of the governing body?	X	
9	Is there any officer, director, trustee, or key employee listed in Part VII, Section A, who cannot be reached at the organization's mailing address? If 'Yes,' provide the names and addresses in Schedule O.		X

Section B. Policies (This Section B requests information about policies not required by the Internal Revenue Code.)

		Yes	No
10 a	Did the organization have local chapters, branches, or affiliates?		X
10 b	If 'Yes,' did the organization have written policies and procedures governing the activities of such chapters, affiliates, and branches to ensure their operations are consistent with the organization's exempt purposes?		
11 a	Has the organization provided a complete copy of this Form 990 to all members of its governing body before filing the form?	X	
11 b	Describe in Schedule O the process, if any, used by the organization to review this Form 990. See Schedule O		
12 a	Did the organization have a written conflict of interest policy? If 'No,' go to line 13.	X	
12 b	Were officers, directors, or trustees, and key employees required to disclose annually interests that could give rise to conflicts?	X	
12 c	Did the organization regularly and consistently monitor and enforce compliance with the policy? If 'Yes,' describe in Schedule O how this was done. See Schedule O.	X	
13	Did the organization have a written whistleblower policy?	X	
14	Did the organization have a written document retention and destruction policy?	X	
15	Did the process for determining compensation of the following persons include a review and approval by independent persons, comparability data, and contemporaneous substantiation of the deliberation and decision?		
15 a	The organization's CEO, Executive Director, or top management official. See Schedule O.	X	
15 b	Other officers or key employees of the organization. See Schedule O.	X	
	If 'Yes' to line 15a or 15b, describe the process in Schedule O (see instructions).		
16 a	Did the organization invest in, contribute assets to, or participate in a joint venture or similar arrangement with a taxable entity during the year?		X
16 b	If 'Yes,' did the organization follow a written policy or procedure requiring the organization to evaluate its participation in joint venture arrangements under applicable federal tax law, and take steps to safeguard the organization's exempt status with respect to such arrangements?		

Section C. Disclosure

- 17** List the states with which a copy of this Form 990 is required to be filed ▶ CA
- 18** Section 6104 requires an organization to make its Forms 1023 (or 1024 if applicable), 990, and 990-T (Section 501(c)(3)s only) available for public inspection. Indicate how you made these available. Check all that apply.
 Own website Another's website Upon request Other (explain in Schedule O)
- 19** Describe in Schedule O whether (and if so, how) the organization made its governing documents, conflict of interest policy, and financial statements available to the public during the tax year. See Schedule O
- 20** State the name, address, and telephone number of the person who possesses the organization's books and records: ▶
 Billy Chen PO Box 70976 Oakland CA 94612 510-587-9696

Part VII Compensation of Officers, Directors, Trustees, Key Employees, Highest Compensated Employees, and Independent Contractors

Check if Schedule O contains a response or note to any line in this Part VII

Section A. Officers, Directors, Trustees, Key Employees, and Highest Compensated Employees

1 a Complete this table for all persons required to be listed. Report compensation for the calendar year ending with or within the organization's tax year.

- List all of the organization's **current** officers, directors, trustees (whether individuals or organizations), regardless of amount of compensation. Enter -0- in columns (D), (E), and (F) if no compensation was paid.
- List all of the organization's **current** key employees, if any. See instructions for definition of 'key employee.'
- List the organization's five **current** highest compensated employees (other than an officer, director, trustee, or key employee) who received reportable compensation (Box 5 of Form W-2 and/or Box 7 of Form 1099-MISC) of more than \$100,000 from the organization and any related organizations.
- List all of the organization's **former** officers, key employees, and highest compensated employees who received more than \$100,000 of reportable compensation from the organization and any related organizations.
- List all of the organization's **former directors or trustees** that received, in the capacity as a former director or trustee of the organization, more than \$10,000 of reportable compensation from the organization and any related organizations.

List persons in the following order: individual trustees or directors; institutional trustees; officers; key employees; highest compensated employees; and former such persons.

Check this box if neither the organization nor any related organization compensated any current officer, director, or trustee.

(A) Name and Title	(B) Average hours per week (list any hours for related organizations below dotted line)	(C) Position (do not check more than one box, unless person is both an officer and a director/trustee)						(D) Reportable compensation from the organization (W-2/1099-MISC)	(E) Reportable compensation from related organizations (W-2/1099-MISC)	(F) Estimated amount of other compensation from the organization and related organizations
		Individual trustee or director	Institutional trustee	Officer	Key employee	Highest compensated employee	Former			
(1) Min Matson, Board Chair & Director	2 0	X		X				0.	0.	0.
(2) Melanie Rowen, Board Vice Ch. & Director	2 0	X		X				0.	0.	0.
(3) Alan Francisco-Tipgos, Treas. & Director	2 0	X		X				0.	0.	0.
(4) Bobbi Dalley Director	2 0	X						0.	0.	0.
(5) Brielle Darynn Director	2 0	X						0.	0.	0.
(6) Mat dos Santos Director	2 0	X						0.	0.	0.
(7) Rose Hayes Director	2 0	X						0.	0.	0.
(8) Chinyere Ezie Director	2 0	X						0.	0.	0.
(9) Bishop Tonyia Rawls Director	2 0	X						0.	0.	0.
(10) Theresa Witherspoon Director	2 0	X						0.	0.	0.
(11) Dr. Marci Bowers Director	2 0	X						0.	0.	0.
(12) Evelyn Rios, Secretary & Director	2 0	X		X				0.	0.	0.
(13) Morgan Darby Director	2 0	X						0.	0.	0.
(14) Kris Hayashi Executive Dir.	40 0			X				100,000.	0.	9,168.

Part VII Section A. Officers, Directors, Trustees, Key Employees, and Highest Compensated Employees (continued)

(A) Name and title	(B) Average hours per week (list any hours for related organizations below dotted line)	(C) Position (do not check more than one box, unless person is both an officer and a director/trustee)						(D) Reportable compensation from the organization (W-2/1099-MISC)	(E) Reportable compensation from related organizations (W-2/1099-MISC)	(F) Estimated amount of other compensation from the organization and related organizations
		Individual trustee or director	Institutional trustee	Officer	Key employee	Highest compensated employee	Former			
(15) Rachel Kahn, Finance/Oper. Director	40 0			X				84,957.	0.	12,488.
(16)										
(17)										
(18)										
(19)										
(20)										
(21)										
(22)										
(23)										
(24)										
(25)										
1 b Sub-total								184,957.	0.	21,656.
c Total from continuation sheets to Part VII, Section A								0.	0.	0.
d Total (add lines 1b and 1c)								184,957.	0.	21,656.
2 Total number of individuals (including but not limited to those listed above) who received more than \$100,000 of reportable compensation from the organization ▶ 0										

	Yes	No
3 Did the organization list any former officer, director, or trustee, key employee, or highest compensated employee on line 1a? <i>If 'Yes,' complete Schedule J for such individual.</i>	3	X
4 For any individual listed on line 1a, is the sum of reportable compensation and other compensation from the organization and related organizations greater than \$150,000? <i>If 'Yes,' complete Schedule J for such individual.</i>	4	X
5 Did any person listed on line 1a receive or accrue compensation from any unrelated organization or individual for services rendered to the organization? <i>If 'Yes,' complete Schedule J for such person.</i>	5	X

Section B. Independent Contractors

1 Complete this table for your five highest compensated independent contractors that received more than \$100,000 of compensation from the organization. Report compensation for the calendar year ending with or within the organization's tax year.

(A) Name and business address	(B) Description of services	(C) Compensation

2 Total number of independent contractors (including but not limited to those listed above) who received more than \$100,000 of compensation from the organization ▶ 0

Part VIII Statement of Revenue

Check if Schedule O contains a response or note to any line in this Part VIII

		(A) Total revenue	(B) Related or exempt function revenue	(C) Unrelated business revenue	(D) Revenue excluded from tax under sections 512-514	
Contributions, Gifts, Grants and Other Similar Amounts	1 a Federated campaigns	1 a				
	b Membership dues	1 b				
	c Fundraising events	1 c 104,832.				
	d Related organizations	1 d				
	e Government grants (contributions)	1 e				
	f All other contributions, gifts, grants, and similar amounts not included above	1 f 4,740,252.				
	g Noncash contributions included in lines 1a-1f: \$	134,554.				
	h Total. Add lines 1a-1f	▶ 4,845,084.				
Program Service Revenue	2 a <u>Contract revenue</u>					
		Business Code 900099	214,281.	214,281.		
	b <u>Program revenue</u>	900099	8,145.	8,145.		
	c _____					
	d _____					
	e _____					
	f All other program service revenue					
g Total. Add lines 2a-2f	▶	222,426.				
Other Revenue	3 Investment income (including dividends, interest and other similar amounts)	▶	24,271.		24,271.	
	4 Income from investment of tax-exempt bond proceeds	▶				
	5 Royalties	▶				
	6 a Gross rents	(i) Real	121,587.			
		(ii) Personal				
		b Less: rental expenses				
		c Rental income or (loss)	121,587.			
	d Net rental income or (loss)	▶	121,587.	121,587.		
	7 a Gross amount from sales of assets other than inventory	(i) Securities	191,357.			
		(ii) Other				
		b Less: cost or other basis and sales expenses	193,691.			
		c Gain or (loss)	-2,334.			
	d Net gain or (loss)	▶	-2,334.		-2,334.	
	8 a Gross income from fundraising events (not including \$ 104,832. of contributions reported on line 1c). See Part IV, line 18	a	9,250.			
		b Less: direct expenses	b 55,887.			
c Net income or (loss) from fundraising events		▶	-46,637.		-46,637.	
9 a Gross income from gaming activities. See Part IV, line 19	a					
	b Less: direct expenses	b				
	c Net income or (loss) from gaming activities	▶				
10 a Gross sales of inventory, less returns and allowances	a					
	b Less: cost of goods sold	b				
	c Net income or (loss) from sales of inventory	▶				
Miscellaneous Revenue		Business Code				
11 a <u>Miscellaneous</u>	900099	13,474.		13,474.		
b _____						
c _____						
d All other revenue						
e Total. Add lines 11a-11d	▶	13,474.				
12 Total revenue. See instructions	▶	5,177,871.	344,013.	0.	-11,226.	

Part IX Statement of Functional Expenses

Section 501(c)(3) and 501(c)(4) organizations must complete all columns. All other organizations must complete column (A).

Check if Schedule O contains a response or note to any line in this Part IX.

Do not include amounts reported on lines 6b, 7b, 8b, 9b, and 10b of Part VIII.	(A) Total expenses	(B) Program service expenses	(C) Management and general expenses	(D) Fundraising expenses
1 Grants and other assistance to domestic organizations and domestic governments. See Part IV, line 21.....	22,398.	22,398.		
2 Grants and other assistance to domestic individuals. See Part IV, line 22.....				
3 Grants and other assistance to foreign organizations, foreign governments, and foreign individuals. See Part IV, lines 15 and 16.....				
4 Benefits paid to or for members.....				
5 Compensation of current officers, directors, trustees, and key employees.....	206,613.	114,223.	48,532.	43,858.
6 Compensation not included above, to disqualified persons (as defined under section 4958(f)(1)) and persons described in section 4958(c)(3)(B).....	0.	0.	0.	0.
7 Other salaries and wages.....	1,577,272.	1,379,148.	27,718.	170,406.
8 Pension plan accruals and contributions (include section 401(k) and 403(b) employer contributions).....				
9 Other employee benefits.....	163,260.	147,190.	-1,802.	17,872.
10 Payroll taxes.....	146,921.	123,922.	5,413.	17,586.
11 Fees for services (non-employees):				
a Management.....				
b Legal.....	39,426.	15,758.	23,668.	
c Accounting.....	77,587.		77,587.	
d Lobbying.....				
e Professional fundraising services. See Part IV, line 17.....	28,699.			28,699.
f Investment management fees.....				
g Other. (If line 11g amount exceeds 10% of line 25, column (A) amount, list line 11g expenses on Schedule O.).....	330,911.	230,568.	97,688.	2,655.
12 Advertising and promotion.....	64,584.	47,578.	1,000.	16,006.
13 Office expenses.....	93,657.	36,807.	53,495.	3,355.
14 Information technology.....	102,443.	33,584.	64,800.	4,059.
15 Royalties.....				
16 Occupancy.....	428,956.		428,956.	
17 Travel.....	365,687.	350,314.	6,958.	8,415.
18 Payments of travel or entertainment expenses for any federal, state, or local public officials.....				
19 Conferences, conventions, and meetings.....	119,298.	46,472.	28,564.	44,262.
20 Interest.....				
21 Payments to affiliates.....				
22 Depreciation, depletion, and amortization.....	16,858.		16,858.	
23 Insurance.....	24,060.	6,530.	17,530.	
24 Other expenses. Itemize expenses not covered above (List miscellaneous expenses in line 24e. If line 24e amount exceeds 10% of line 25, column (A) amount, list line 24e expenses on Schedule O.).....				
a <u>Miscellaneous</u>	68,903.	41,950.	3,017.	23,936.
b <u>Professional development</u>	29,678.	23,790.	5,423.	465.
c <u>Staff & volunteer appreciation</u>	6,888.	1,750.	4,994.	144.
d <u>Allocation of shared costs</u>		591,911.	-675,958.	84,047.
e All other expenses.....				
25 Total functional expenses. Add lines 1 through 24e.	3,914,099.	3,213,893.	234,441.	465,765.
26 Joint costs. Complete this line only if the organization reported in column (B) joint costs from a combined educational campaign and fundraising solicitation. Check here <input type="checkbox"/> if following SOP 98-2 (ASC 958-720).....				

Part X Balance Sheet

Check if Schedule O contains a response or note to any line in this Part X.

		(A) Beginning of year		(B) End of year
Assets	1 Cash – non-interest-bearing.....	598,582.	1	559,768.
	2 Savings and temporary cash investments.....		2	
	3 Pledges and grants receivable, net.....	365,695.	3	674,375.
	4 Accounts receivable, net.....	47,630.	4	29,685.
	5 Loans and other receivables from current and former officers, directors, trustees, key employees, and highest compensated employees. Complete Part II of Schedule L.....		5	
	6 Loans and other receivables from other disqualified persons (as defined under section 4958(f)(1)), persons described in section 4958(c)(3)(B), and contributing employers and sponsoring organizations of section 501(c)(9) voluntary employees' beneficiary organizations (see instructions). Complete Part II of Schedule L.....		6	
	7 Notes and loans receivable, net.....		7	
	8 Inventories for sale or use.....		8	
	9 Prepaid expenses and deferred charges.....	166,181.	9	174,182.
	10a Land, buildings, and equipment: cost or other basis. Complete Part VI of Schedule D.....	10a 67,725.		
	b Less: accumulated depreciation.....	10b 41,910.	42,674.	10c 25,815.
	11 Investments – publicly traded securities.....	818,221.	11	2,065,585.
	12 Investments – other securities. See Part IV, line 11.....		12	
	13 Investments – program-related. See Part IV, line 11.....		13	
	14 Intangible assets.....		14	
	15 Other assets. See Part IV, line 11.....		15	
16 Total assets. Add lines 1 through 15 (must equal line 34).....	2,038,983.	16	3,529,410.	
Liabilities	17 Accounts payable and accrued expenses.....	253,169.	17	298,256.
	18 Grants payable.....		18	
	19 Deferred revenue.....		19	13,557.
	20 Tax-exempt bond liabilities.....		20	
	21 Escrow or custodial account liability. Complete Part IV of Schedule D.....		21	
	22 Loans and other payables to current and former officers, directors, trustees, key employees, highest compensated employees, and disqualified persons. Complete Part II of Schedule L.....		22	
	23 Secured mortgages and notes payable to unrelated third parties.....		23	
	24 Unsecured notes and loans payable to unrelated third parties.....		24	
	25 Other liabilities (including federal income tax, payables to related third parties, and other liabilities not included on lines 17-24). Complete Part X of Schedule D.....	36,423.	25	83,167.
	26 Total liabilities. Add lines 17 through 25.....	289,592.	26	394,980.
Net Assets or Fund Balances	Organizations that follow SFAS 117 (ASC 958), check here <input checked="" type="checkbox"/> and complete lines 27 through 29, and lines 33 and 34.			
	27 Unrestricted net assets.....	632,023.	27	850,925.
	28 Temporarily restricted net assets.....	1,117,368.	28	2,283,505.
	29 Permanently restricted net assets.....		29	
	Organizations that do not follow SFAS 117 (ASC 958), check here <input type="checkbox"/> and complete lines 30 through 34.			
	30 Capital stock or trust principal, or current funds.....		30	
	31 Paid-in or capital surplus, or land, building, or equipment fund.....		31	
	32 Retained earnings, endowment, accumulated income, or other funds.....		32	
	33 Total net assets or fund balances.....	1,749,391.	33	3,134,430.
	34 Total liabilities and net assets/fund balances.....	2,038,983.	34	3,529,410.

BAA

Form **990** (2017)

Part XI Reconciliation of Net Assets

Check if Schedule O contains a response or note to any line in this Part XI.

1	Total revenue (must equal Part VIII, column (A), line 12)	1	5,177,871.
2	Total expenses (must equal Part IX, column (A), line 25)	2	3,914,099.
3	Revenue less expenses. Subtract line 2 from line 1	3	1,263,772.
4	Net assets or fund balances at beginning of year (must equal Part X, line 33, column (A))	4	1,749,391.
5	Net unrealized gains (losses) on investments	5	121,267.
6	Donated services and use of facilities	6	
7	Investment expenses	7	
8	Prior period adjustments	8	
9	Other changes in net assets or fund balances (explain in Schedule O)	9	0.
10	Net assets or fund balances at end of year. Combine lines 3 through 9 (must equal Part X, line 33, column (B))	10	3,134,430.

Part XII Financial Statements and Reporting

Check if Schedule O contains a response or note to any line in this Part XII.

		Yes	No
1	Accounting method used to prepare the Form 990: <input type="checkbox"/> Cash <input checked="" type="checkbox"/> Accrual <input type="checkbox"/> Other _____ If the organization changed its method of accounting from a prior year or checked 'Other,' explain in Schedule O.		
2 a	Were the organization's financial statements compiled or reviewed by an independent accountant? If 'Yes,' check a box below to indicate whether the financial statements for the year were compiled or reviewed on a separate basis, consolidated basis, or both: <input type="checkbox"/> Separate basis <input type="checkbox"/> Consolidated basis <input type="checkbox"/> Both consolidated and separate basis		X
2 b	Were the organization's financial statements audited by an independent accountant? If 'Yes,' check a box below to indicate whether the financial statements for the year were audited on a separate basis, consolidated basis, or both: <input checked="" type="checkbox"/> Separate basis <input type="checkbox"/> Consolidated basis <input type="checkbox"/> Both consolidated and separate basis	X	
2 c	If 'Yes' to line 2a or 2b, does the organization have a committee that assumes responsibility for oversight of the audit, review, or compilation of its financial statements and selection of an independent accountant? If the organization changed either its oversight process or selection process during the tax year, explain in Schedule O.	X	
3 a	As a result of a federal award, was the organization required to undergo an audit or audits as set forth in the Single Audit Act and OMB Circular A-133?		X
3 b	If 'Yes,' did the organization undergo the required audit or audits? If the organization did not undergo the required audit or audits, explain why in Schedule O and describe any steps taken to undergo such audits.		

BAA

Form **990** (2017)

SCHEDULE A
(Form 990 or 990-EZ)

Department of the Treasury
Internal Revenue Service

Public Charity Status and Public Support

Complete if the organization is a section 501(c)(3) organization or a section 4947(a)(1) nonexempt charitable trust.

▶ Attach to Form 990 or Form 990-EZ.

▶ Go to www.irs.gov/Form990 for instructions and the latest information.

OMB No. 1545-0047

2017

Open to Public Inspection

Name of the organization Transgender Law Center	Employer identification number 05-0544006
---	---

Part I Reason for Public Charity Status (All organizations must complete this part.) See instructions.

The organization is not a private foundation because it is: (For lines 1 through 12, check only one box.)

- 1 A church, convention of churches, or association of churches described in **section 170(b)(1)(A)(i)**.
- 2 A school described in **section 170(b)(1)(A)(ii)**. (Attach Schedule E (Form 990 or 990-EZ).)
- 3 A hospital or a cooperative hospital service organization described in **section 170(b)(1)(A)(iii)**.
- 4 A medical research organization operated in conjunction with a hospital described in **section 170(b)(1)(A)(iii)**. Enter the hospital's name, city, and state: _____
- 5 An organization operated for the benefit of a college or university owned or operated by a governmental unit described in **section 170(b)(1)(A)(iv)**. (Complete Part II.)
- 6 A federal, state, or local government or governmental unit described in **section 170(b)(1)(A)(v)**.
- 7 An organization that normally receives a substantial part of its support from a governmental unit or from the general public described in **section 170(b)(1)(A)(vi)**. (Complete Part II.)
- 8 A community trust described in **section 170(b)(1)(A)(vi)**. (Complete Part II.)
- 9 An agricultural research organization described in **section 170(b)(1)(A)(ix)** operated in conjunction with a land-grant college or university or a non-land-grant college of agriculture (see instructions). Enter the name, city, and state of the college or university: _____
- 10 An organization that normally receives: (1) more than 33-1/3% of its support from contributions, membership fees, and gross receipts from activities related to its exempt functions—subject to certain exceptions, and (2) no more than 33-1/3% of its support from gross investment income and unrelated business taxable income (less section 511 tax) from businesses acquired by the organization after June 30, 1975. See **section 509(a)(2)**. (Complete Part III.)
- 11 An organization organized and operated exclusively to test for public safety. See **section 509(a)(4)**.
- 12 An organization organized and operated exclusively for the benefit of, to perform the functions of, or to carry out the purposes of one or more publicly supported organizations described in **section 509(a)(1)** or **section 509(a)(2)**. See **section 509(a)(3)**. Check the box in lines 12a through 12d that describes the type of supporting organization and complete lines 12e, 12f, and 12g.
 - a **Type I.** A supporting organization operated, supervised, or controlled by its supported organization(s), typically by giving the supported organization(s) the power to regularly appoint or elect a majority of the directors or trustees of the supporting organization. **You must complete Part IV, Sections A and B.**
 - b **Type II.** A supporting organization supervised or controlled in connection with its supported organization(s), by having control or management of the supporting organization vested in the same persons that control or manage the supported organization(s). **You must complete Part IV, Sections A and C.**
 - c **Type III functionally integrated.** A supporting organization operated in connection with, and functionally integrated with, its supported organization(s) (see instructions). **You must complete Part IV, Sections A, D, and E.**
 - d **Type III non-functionally integrated.** A supporting organization operated in connection with its supported organization(s) that is not functionally integrated. The organization generally must satisfy a distribution requirement and an attentiveness requirement (see instructions). **You must complete Part IV, Sections A and D, and Part V.**
 - e Check this box if the organization received a written determination from the IRS that it is a Type I, Type II, Type III functionally integrated, or Type III non-functionally integrated supporting organization.
 - f Enter the number of supported organizations
 - g Provide the following information about the supported organization(s).

(i) Name of supported organization	(ii) EIN	(iii) Type of organization (described on lines 1-10 above (see instructions))	(iv) Is the organization listed in your governing document?		(v) Amount of monetary support (see instructions)	(vi) Amount of other support (see instructions)
			Yes	No		
(A)						
(B)						
(C)						
(D)						
(E)						
Total						

Part II Support Schedule for Organizations Described in Sections 170(b)(1)(A)(iv) and 170(b)(1)(A)(vi)

(Complete only if you checked the box on line 5, 7, or 8 of Part I or if the organization failed to qualify under Part III. If the organization fails to qualify under the tests listed below, please complete Part III.)

Section A. Public Support

Calendar year (or fiscal year beginning in) ▶	(a) 2013	(b) 2014	(c) 2015	(d) 2016	(e) 2017	(f) Total
1 Gifts, grants, contributions, and membership fees received. (Do not include any 'unusual grants'.)	1,560,419.	1,639,654.	2,411,801.	2,888,498.	4,845,084.	13,345,456.
2 Tax revenues levied for the organization's benefit and either paid to or expended on its behalf.						0.
3 The value of services or facilities furnished by a governmental unit to the organization without charge						0.
4 Total. Add lines 1 through 3.	1,560,419.	1,639,654.	2,411,801.	2,888,498.	4,845,084.	13,345,456.
5 The portion of total contributions by each person (other than a governmental unit or publicly supported organization) included on line 1 that exceeds 2% of the amount shown on line 11, column (f)						2,888,796.
6 Public support. Subtract line 5 from line 4.						10,456,660.

Section B. Total Support

Calendar year (or fiscal year beginning in) ▶	(a) 2013	(b) 2014	(c) 2015	(d) 2016	(e) 2017	(f) Total
7 Amounts from line 4.	1,560,419.	1,639,654.	2,411,801.	2,888,498.	4,845,084.	13,345,456.
8 Gross income from interest, dividends, payments received on securities loans, rents, royalties, and income from similar sources.	13,298.	19,606.	22,460.	23,364.	24,271.	102,999.
9 Net income from unrelated business activities, whether or not the business is regularly carried on.						0.
10 Other income. Do not include gain or loss from the sale of capital assets (Explain in Part VI.) See Part VI.	6,647.	898.	3,204.	12,171.	13,474.	36,394.
11 Total support. Add lines 7 through 10.						13,484,849.
12 Gross receipts from related activities, etc. (see instructions)					12	598,136.
13 First five years. If the Form 990 is for the organization's first, second, third, fourth, or fifth tax year as a section 501(c)(3) organization, check this box and stop here ▶ <input type="checkbox"/>						

Section C. Computation of Public Support Percentage

14 Public support percentage for 2017 (line 6, column (f) divided by line 11, column (f)).	14	77.54 %
15 Public support percentage from 2016 Schedule A, Part II, line 14.	15	72.28 %

16a 33-1/3% support test—2017. If the organization did not check the box on line 13, and line 14 is 33-1/3% or more, check this box and **stop here**. The organization qualifies as a publicly supported organization. ▶

b 33-1/3% support test—2016. If the organization did not check a box on line 13 or 16a, and line 15 is 33-1/3% or more, check this box and **stop here**. The organization qualifies as a publicly supported organization. ▶

17a 10%-facts-and-circumstances test—2017. If the organization did not check a box on line 13, 16a, or 16b, and line 14 is 10% or more, and if the organization meets the 'facts-and-circumstances' test, check this box and **stop here**. Explain in Part VI how the organization meets the 'facts-and-circumstances' test. The organization qualifies as a publicly supported organization. ▶

b 10%-facts-and-circumstances test—2016. If the organization did not check a box on line 13, 16a, 16b, or 17a, and line 15 is 10% or more, and if the organization meets the 'facts-and-circumstances' test, check this box and **stop here**. Explain in Part VI how the organization meets the 'facts-and-circumstances' test. The organization qualifies as a publicly supported organization. ▶

18 Private foundation. If the organization did not check a box on line 13, 16a, 16b, 17a, or 17b, check this box and see instructions. ▶

Part III Support Schedule for Organizations Described in Section 509(a)(2)

(Complete only if you checked the box on line 10 of Part I or if the organization failed to qualify under Part II. If the organization fails to qualify under the tests listed below, please complete Part II.)

Section A. Public Support

Calendar year (or fiscal year beginning in) ▶	(a) 2013	(b) 2014	(c) 2015	(d) 2016	(e) 2017	(f) Total
1 Gifts, grants, contributions, and membership fees received. (Do not include any 'unusual grants'.)						
2 Gross receipts from admissions, merchandise sold or services performed, or facilities furnished in any activity that is related to the organization's tax-exempt purpose.						
3 Gross receipts from activities that are not an unrelated trade or business under section 513.						
4 Tax revenues levied for the organization's benefit and either paid to or expended on its behalf.						
5 The value of services or facilities furnished by a governmental unit to the organization without charge.						
6 Total. Add lines 1 through 5.						
7a Amounts included on lines 1, 2, and 3 received from disqualified persons.						
b Amounts included on lines 2 and 3 received from other than disqualified persons that exceed the greater of \$5,000 or 1% of the amount on line 13 for the year.						
c Add lines 7a and 7b.						
8 Public support. (Subtract line 7c from line 6.)						

Section B. Total Support

Calendar year (or fiscal year beginning in) ▶	(a) 2013	(b) 2014	(c) 2015	(d) 2016	(e) 2017	(f) Total
9 Amounts from line 6.						
10a Gross income from interest, dividends, payments received on securities loans, rents, royalties, and income from similar sources.						
b Unrelated business taxable income (less section 511 taxes) from businesses acquired after June 30, 1975.						
c Add lines 10a and 10b.						
11 Net income from unrelated business activities not included in line 10b, whether or not the business is regularly carried on.						
12 Other income. Do not include gain or loss from the sale of capital assets (Explain in Part VI.)						
13 Total support. (Add lines 9, 10c, 11, and 12.)						

14 First five years. If the Form 990 is for the organization's first, second, third, fourth, or fifth tax year as a section 501(c)(3) organization, check this box and **stop here**. ▶

Section C. Computation of Public Support Percentage

15 Public support percentage for 2017 (line 8, column (f) divided by line 13, column (f)).	15	%
16 Public support percentage from 2016 Schedule A, Part III, line 15.	16	%

Section D. Computation of Investment Income Percentage

17 Investment income percentage for 2017 (line 10c, column (f) divided by line 13, column (f)).	17	%
18 Investment income percentage from 2016 Schedule A, Part III, line 17.	18	%

19a 33-1/3% support tests—2017. If the organization did not check the box on line 14, and line 15 is more than 33-1/3%, and line 17 is not more than 33-1/3%, check this box and **stop here**. The organization qualifies as a publicly supported organization. ▶

b 33-1/3% support tests—2016. If the organization did not check a box on line 14 or line 19a, and line 16 is more than 33-1/3%, and line 18 is not more than 33-1/3%, check this box and **stop here**. The organization qualifies as a publicly supported organization. ▶

20 Private foundation. If the organization did not check a box on line 14, 19a, or 19b, check this box and see instructions. ▶

Part IV Supporting Organizations

(Complete only if you checked a box in line 12 on Part I. If you checked 12a of Part I, complete Sections A and B. If you checked 12b of Part I, complete Sections A and C. If you checked 12c of Part I, complete Sections A, D, and E. If you checked 12d of Part I, complete Sections A and D, and complete Part V.)

Section A. All Supporting Organizations

	Yes	No
1 Are all of the organization's supported organizations listed by name in the organization's governing documents? <i>If 'No,' describe in Part VI how the supported organizations are designated. If designated by class or purpose, describe the designation. If historic and continuing relationship, explain.</i>		
2 Did the organization have any supported organization that does not have an IRS determination of status under section 509(a)(1) or (2)? <i>If 'Yes,' explain in Part VI how the organization determined that the supported organization was described in section 509(a)(1) or (2).</i>		
3a Did the organization have a supported organization described in section 501(c)(4), (5), or (6)? <i>If 'Yes,' answer (b) and (c) below.</i>		
b Did the organization confirm that each supported organization qualified under section 501(c)(4), (5), or (6) and satisfied the public support tests under section 509(a)(2)? <i>If 'Yes,' describe in Part VI when and how the organization made the determination.</i>		
c Did the organization ensure that all support to such organizations was used exclusively for section 170(c)(2)(B) purposes? <i>If 'Yes,' explain in Part VI what controls the organization put in place to ensure such use.</i>		
4a Was any supported organization not organized in the United States ('foreign supported organization')? <i>If 'Yes' and if you checked 12a or 12b in Part I, answer (b) and (c) below.</i>		
b Did the organization have ultimate control and discretion in deciding whether to make grants to the foreign supported organization? <i>If 'Yes,' describe in Part VI how the organization had such control and discretion despite being controlled or supervised by or in connection with its supported organizations.</i>		
c Did the organization support any foreign supported organization that does not have an IRS determination under sections 501(c)(3) and 509(a)(1) or (2)? <i>If 'Yes,' explain in Part VI what controls the organization used to ensure that all support to the foreign supported organization was used exclusively for section 170(c)(2)(B) purposes.</i>		
5a Did the organization add, substitute, or remove any supported organizations during the tax year? <i>If 'Yes,' answer (b) and (c) below (if applicable). Also, provide detail in Part VI, including (i) the names and EIN numbers of the supported organizations added, substituted, or removed; (ii) the reasons for each such action; (iii) the authority under the organization's organizing document authorizing such action; and (iv) how the action was accomplished (such as by amendment to the organizing document).</i>		
b Type I or Type II only. Was any added or substituted supported organization part of a class already designated in the organization's organizing document?		
c Substitutions only. Was the substitution the result of an event beyond the organization's control?		
6 Did the organization provide support (whether in the form of grants or the provision of services or facilities) to anyone other than (i) its supported organizations, (ii) individuals that are part of the charitable class benefited by one or more of its supported organizations, or (iii) other supporting organizations that also support or benefit one or more of the filing organization's supported organizations? <i>If 'Yes,' provide detail in Part VI.</i>		
7 Did the organization provide a grant, loan, compensation, or other similar payment to a substantial contributor (defined in section 4958(c)(3)(C)), a family member of a substantial contributor, or a 35% controlled entity with regard to a substantial contributor? <i>If 'Yes,' complete Part I of Schedule L (Form 990 or 990-EZ).</i>		
8 Did the organization make a loan to a disqualified person (as defined in section 4958) not described in line 7? <i>If 'Yes,' complete Part I of Schedule L (Form 990 or 990-EZ).</i>		
9a Was the organization controlled directly or indirectly at any time during the tax year by one or more disqualified persons as defined in section 4946 (other than foundation managers and organizations described in section 509(a)(1) or (2))? <i>If 'Yes,' provide detail in Part VI.</i>		
b Did one or more disqualified persons (as defined in line 9a) hold a controlling interest in any entity in which the supporting organization had an interest? <i>If 'Yes,' provide detail in Part VI.</i>		
c Did a disqualified person (as defined in line 9a) have an ownership interest in, or derive any personal benefit from, assets in which the supporting organization also had an interest? <i>If 'Yes,' provide detail in Part VI.</i>		
10a Was the organization subject to the excess business holdings rules of section 4943 because of section 4943(f) (regarding certain Type II supporting organizations, and all Type III non-functionally integrated supporting organizations)? <i>If 'Yes,' answer 10b below.</i>		
b Did the organization have any excess business holdings in the tax year? <i>(Use Schedule C, Form 4720, to determine whether the organization had excess business holdings.)</i>		

Part IV Supporting Organizations *(continued)*

	Yes	No
11 Has the organization accepted a gift or contribution from any of the following persons?		
a A person who directly or indirectly controls, either alone or together with persons described in (b) and (c) below, the governing body of a supported organization?		
b A family member of a person described in (a) above?		
c A 35% controlled entity of a person described in (a) or (b) above? <i>If 'Yes' to a, b, or c, provide detail in Part VI.</i>		

Section B. Type I Supporting Organizations

	Yes	No
1 Did the directors, trustees, or membership of one or more supported organizations have the power to regularly appoint or elect at least a majority of the organization's directors or trustees at all times during the tax year? <i>If 'No,' describe in Part VI how the supported organization(s) effectively operated, supervised, or controlled the organization's activities. If the organization had more than one supported organization, describe how the powers to appoint and/or remove directors or trustees were allocated among the supported organizations and what conditions or restrictions, if any, applied to such powers during the tax year.</i>		
2 Did the organization operate for the benefit of any supported organization other than the supported organization(s) that operated, supervised, or controlled the supporting organization? <i>If 'Yes,' explain in Part VI how providing such benefit carried out the purposes of the supported organization(s) that operated, supervised, or controlled the supporting organization.</i>		

Section C. Type II Supporting Organizations

	Yes	No
1 Were a majority of the organization's directors or trustees during the tax year also a majority of the directors or trustees of each of the organization's supported organization(s)? <i>If 'No,' describe in Part VI how control or management of the supporting organization was vested in the same persons that controlled or managed the supported organization(s).</i>		

Section D. All Type III Supporting Organizations

	Yes	No
1 Did the organization provide to each of its supported organizations, by the last day of the fifth month of the organization's tax year, (i) a written notice describing the type and amount of support provided during the prior tax year, (ii) a copy of the Form 990 that was most recently filed as of the date of notification, and (iii) copies of the organization's governing documents in effect on the date of notification, to the extent not previously provided?		
2 Were any of the organization's officers, directors, or trustees either (i) appointed or elected by the supported organization(s) or (ii) serving on the governing body of a supported organization? <i>If 'No,' explain in Part VI how the organization maintained a close and continuous working relationship with the supported organization(s).</i>		
3 By reason of the relationship described in (2), did the organization's supported organizations have a significant voice in the organization's investment policies and in directing the use of the organization's income or assets at all times during the tax year? <i>If 'Yes,' describe in Part VI the role the organization's supported organizations played in this regard.</i>		

Section E. Type III Functionally Integrated Supporting Organizations

1 Check the box next to the method that the organization used to satisfy the Integral Part Test during the year (see instructions) .			
a <input type="checkbox"/> The organization satisfied the Activities Test. <i>Complete line 2 below.</i>			
b <input type="checkbox"/> The organization is the parent of each of its supported organizations. <i>Complete line 3 below.</i>			
c <input type="checkbox"/> The organization supported a governmental entity. <i>Describe in Part VI how you supported a government entity (see instructions).</i>			
2 Activities Test. Answer (a) and (b) below.			
a Did substantially all of the organization's activities during the tax year directly further the exempt purposes of the supported organization(s) to which the organization was responsive? <i>If 'Yes,' then in Part VI identify those supported organizations and explain how these activities directly furthered their exempt purposes, how the organization was responsive to those supported organizations, and how the organization determined that these activities constituted substantially all of its activities.</i>			
b Did the activities described in (a) constitute activities that, but for the organization's involvement, one or more of the organization's supported organization(s) would have been engaged in? <i>If 'Yes,' explain in Part VI the reasons for the organization's position that its supported organization(s) would have engaged in these activities but for the organization's involvement.</i>			
3 Parent of Supported Organizations. Answer (a) and (b) below.			
a Did the organization have the power to regularly appoint or elect a majority of the officers, directors, or trustees of each of the supported organizations? <i>Provide details in Part VI.</i>			
b Did the organization exercise a substantial degree of direction over the policies, programs, and activities of each of its supported organizations? <i>If 'Yes,' describe in Part VI the role played by the organization in this regard.</i>			

Part V Type III Non-Functionally Integrated 509(a)(3) Supporting Organizations

1 Check here if the organization satisfied the Integral Part Test as a qualifying trust on Nov. 20, 1970 (explain in Part VI). **See instructions.** All other Type III non-functionally integrated supporting organizations must complete Sections A through E.

Section A – Adjusted Net Income		(A) Prior Year	(B) Current Year (optional)
1	Net short-term capital gain	1	
2	Recoveries of prior-year distributions	2	
3	Other gross income (see instructions)	3	
4	Add lines 1 through 3.	4	
5	Depreciation and depletion	5	
6	Portion of operating expenses paid or incurred for production or collection of gross income or for management, conservation, or maintenance of property held for production of income (see instructions)	6	
7	Other expenses (see instructions)	7	
8	Adjusted Net Income (subtract lines 5, 6, and 7 from line 4).	8	

Section B – Minimum Asset Amount		(A) Prior Year	(B) Current Year (optional)
1	Aggregate fair market value of all non-exempt-use assets (see instructions for short tax year or assets held for part of year):		
a	Average monthly value of securities	1a	
b	Average monthly cash balances	1b	
c	Fair market value of other non-exempt-use assets	1c	
d	Total (add lines 1a, 1b, and 1c)	1d	
e	Discount claimed for blockage or other factors (explain in detail in Part VI):		
2	Acquisition indebtedness applicable to non-exempt-use assets	2	
3	Subtract line 2 from line 1d.	3	
4	Cash deemed held for exempt use. Enter 1-1/2% of line 3 (for greater amount, see instructions).	4	
5	Net value of non-exempt-use assets (subtract line 4 from line 3)	5	
6	Multiply line 5 by .035.	6	
7	Recoveries of prior-year distributions	7	
8	Minimum Asset Amount (add line 7 to line 6)	8	

Section C – Distributable Amount			Current Year
1	Adjusted net income for prior year (from Section A, line 8, Column A)	1	
2	Enter 85% of line 1.	2	
3	Minimum asset amount for prior year (from Section B, line 8, Column A)	3	
4	Enter greater of line 2 or line 3.	4	
5	Income tax imposed in prior year	5	
6	Distributable Amount. Subtract line 5 from line 4, unless subject to emergency temporary reduction (see instructions).	6	

7 Check here if the current year is the organization's first as a non-functionally integrated Type III supporting organization (see instructions).

BAA

Schedule A (Form 990 or 990-EZ) 2017

Part V Type III Non-Functionally Integrated 509(a)(3) Supporting Organizations (continued)

Section D – Distributions	Current Year
1 Amounts paid to supported organizations to accomplish exempt purposes	
2 Amounts paid to perform activity that directly furthers exempt purposes of supported organizations, in excess of income from activity	
3 Administrative expenses paid to accomplish exempt purposes of supported organizations	
4 Amounts paid to acquire exempt-use assets	
5 Qualified set-aside amounts (prior IRS approval required)	
6 Other distributions (describe in Part VI). See instructions.	
7 Total annual distributions. Add lines 1 through 6.	
8 Distributions to attentive supported organizations to which the organization is responsive (provide details in Part VI). See instructions.	
9 Distributable amount for 2017 from Section C, line 6	
10 Line 8 amount divided by line 9 amount	

Section E – Distribution Allocations (see instructions)	(i) Excess Distributions	(ii) Underdistributions Pre-2017	(iii) Distributable Amount for 2017
1 Distributable amount for 2017 from Section C, line 6			
2 Underdistributions, if any, for years prior to 2017 (reasonable cause required – explain in Part VI). See instructions.			
3 Excess distributions carryover, if any, to 2017			
a			
b From 2013			
c From 2014			
d From 2015			
e From 2016			
f Total of lines 3a through e			
g Applied to underdistributions of prior years			
h Applied to 2017 distributable amount			
i Carryover from 2012 not applied (see instructions)			
j Remainder. Subtract lines 3g, 3h, and 3i from 3f.			
4 Distributions for 2017 from Section D, line 7: \$			
a Applied to underdistributions of prior years			
b Applied to 2017 distributable amount			
c Remainder. Subtract lines 4a and 4b from 4.			
5 Remaining underdistributions for years prior to 2017, if any. Subtract lines 3g and 4a from line 2. For result greater than zero, explain in Part VI. See instructions.			
6 Remaining underdistributions for 2017. Subtract lines 3h and 4b from line 1. For result greater than zero, explain in Part VI. See instructions.			
7 Excess distributions carryover to 2018. Add lines 3j and 4c.			
8 Breakdown of line 7:			
a Excess from 2013			
b Excess from 2014			
c Excess from 2015			
d Excess from 2016			
e Excess from 2017			

BAA

Schedule A (Form 990 or 990-EZ) 2017

Part VI Supplemental Information. Provide the explanations required by Part II, line 10; Part II, line 17a or 17b; Part III, line 12; Part IV, Section A, lines 1, 2, 3b, 3c, 4b, 4c, 5a, 6, 9a, 9b, 9c, 11a, 11b, and 11c; Part IV, Section B, lines 1 and 2; Part IV, Section C, line 1; Part IV, Section D, lines 2 and 3; Part IV, Section E, lines 1c, 2a, 2b, 3a, and 3b; Part V, line 1; Part V, Section B, line 1e; Part V, Section D, lines 5, 6, and 8; and Part V, Section E, lines 2, 5, and 6. Also complete this part for any additional information.
(See instructions.)

Part II, Line 10 - Other Income

<u>Nature and Source</u>	<u>2017</u>	<u>2016</u>	<u>2015</u>	<u>2014</u>	<u>2013</u>
Miscellaneous	\$ 13,474.	\$ 12,171.	\$ 3,204.	\$ 898.	\$ 6,647.
Total	<u>\$ 13,474.</u>	<u>\$ 12,171.</u>	<u>\$ 3,204.</u>	<u>\$ 898.</u>	<u>\$ 6,647.</u>

Additional Explanation of Other Income

From time to time, miscellaneous funds are received during the course of performing the organization's tax-exempt function.

SCHEDULE C
(Form 990 or 990-EZ)

Political Campaign and Lobbying Activities

OMB No. 1545-0047

For Organizations Exempt From Income Tax Under section 501(c) and section 527

2017

Department of the Treasury
Internal Revenue Service

▶ **Complete if the organization is described below. ▶ Attach to Form 990 or Form 990-EZ.**
▶ **Go to at www.irs.gov/Form990 for instructions and the latest information**

Open to Public Inspection

If the organization answered 'Yes,' on Form 990, Part IV, line 3, or Form 990-EZ, Part V, line 46 (Political Campaign Activities), then

- Section 501(c)(3) organizations: Complete Parts I-A and B. Do not complete Part I-C.
- Section 501(c) (other than section 501(c)(3)) organizations: Complete Parts I-A and C below. Do not complete Part I-B.
- Section 527 organizations: Complete Part I-A only.

If the organization answered 'Yes,' on Form 990, Part IV, line 4, or Form 990-EZ, Part VI, line 47 (Lobbying Activities), then

- Section 501(c)(3) organizations that have filed Form 5768 (election under section 501(h)): Complete Part II-A. Do not complete Part II-B.
- Section 501(c)(3) organizations that have NOT filed Form 5768 (election under section 501(h)): Complete Part II-B. Do not complete Part II-A.

If the organization answered 'Yes,' on Form 990, Part IV, line 5 (Proxy Tax) (see separate instructions) or Form 990-EZ, Part V, line 35c (Proxy Tax) (see separate instructions), then

- Section 501(c)(4), (5), or (6) organizations: Complete Part III.

Name of organization Transgender Law Center	Employer identification number 05-0544006
---	---

Part I-A Complete if the organization is exempt under section 501(c) or is a section 527 organization.

- 1 Provide a description of the organization's direct and indirect political campaign activities in Part IV. (see instructions for definition of 'political campaign activities')
- 2 Political campaign activity expenditures (see instructions) ▶ \$ _____
- 3 Volunteer hours for political campaign activities (see instructions)

Part I-B Complete if the organization is exempt under section 501(c)(3).

- 1 Enter the amount of any excise tax incurred by the organization under section 4955 ▶ \$ _____ 0.
- 2 Enter the amount of any excise tax incurred by organization managers under section 4955 ▶ \$ _____ 0.
- 3 If the organization incurred a section 4955 tax, did it file Form 4720 for this year? Yes No
- 4 a Was a correction made? Yes No
b If 'Yes,' describe in Part IV.

Part I-C Complete if the organization is exempt under section 501(c) , except section 501(c)(3).

- 1 Enter the amount directly expended by the filing organization for section 527 exempt function activities ▶ \$ _____
- 2 Enter the amount of the filing organization's funds contributed to other organizations for section 527 exempt function activities ▶ \$ _____
- 3 Total exempt function expenditures. Add lines 1 and 2. Enter here and on Form 1120-POL, line 17b ▶ \$ _____
- 4 Did the filing organization file **Form 1120-POL** for this year? Yes No
- 5 Enter the names, addresses and employer identification number (EIN) of all section 527 political organizations to which the filing organization made payments. For each organization listed, enter the amount paid from the filing organization's funds. Also enter the amount of political contributions received that were promptly and directly delivered to a separate political organization, such as a separate segregated fund or a political action committee (PAC). If additional space is needed, provide information in Part IV.

(a) Name	(b) Address	(c) EIN	(d) Amount paid from filing organization's funds. If none, enter -0-.	(e) Amount of political contributions received and promptly and directly delivered to a separate political organization. If none, enter -0-.
(1)	-----			
(2)	-----			
(3)	-----			
(4)	-----			
(5)	-----			
(6)	-----			

Part II-A Complete if the organization is exempt under section 501(c)(3) and filed Form 5768 (election under section 501(h)).

- A** Check if the filing organization belongs to an affiliated group (and list in Part IV each affiliated group member's name, address, EIN, expenses, and share of excess lobbying expenditures).
- B** Check if the filing organization checked box A and 'limited control' provisions apply.

Limits on Lobbying Expenditures (The term 'expenditures' means amounts paid or incurred.)		(a) Filing organization's totals	(b) Affiliated group totals												
1 a Total lobbying expenditures to influence public opinion (grass roots lobbying).....		2,006.													
b Total lobbying expenditures to influence a legislative body (direct lobbying).....		10,400.													
c Total lobbying expenditures (add lines 1a and 1b).....		12,406.	0.												
d Other exempt purpose expenditures.....		3,901,693.													
e Total exempt purpose expenditures (add lines 1c and 1d).....		3,914,099.	0.												
f Lobbying nontaxable amount. Enter the amount from the following table in both columns.....		345,705.													
<table border="1"> <thead> <tr> <th>If the amount on line 1e, column (a) or (b) is:</th> <th>The lobbying nontaxable amount is:</th> </tr> </thead> <tbody> <tr> <td>Not over \$500,000</td> <td>20% of the amount on line 1e.</td> </tr> <tr> <td>Over \$500,000 but not over \$1,000,000</td> <td>\$100,000 plus 15% of the excess over \$500,000.</td> </tr> <tr> <td>Over \$1,000,000 but not over \$1,500,000</td> <td>\$175,000 plus 10% of the excess over \$1,000,000.</td> </tr> <tr> <td>Over \$1,500,000 but not over \$17,000,000</td> <td>\$225,000 plus 5% of the excess over \$1,500,000.</td> </tr> <tr> <td>Over \$17,000,000</td> <td>\$1,000,000.</td> </tr> </tbody> </table>		If the amount on line 1e, column (a) or (b) is:	The lobbying nontaxable amount is:	Not over \$500,000	20% of the amount on line 1e.	Over \$500,000 but not over \$1,000,000	\$100,000 plus 15% of the excess over \$500,000.	Over \$1,000,000 but not over \$1,500,000	\$175,000 plus 10% of the excess over \$1,000,000.	Over \$1,500,000 but not over \$17,000,000	\$225,000 plus 5% of the excess over \$1,500,000.	Over \$17,000,000	\$1,000,000.		
If the amount on line 1e, column (a) or (b) is:	The lobbying nontaxable amount is:														
Not over \$500,000	20% of the amount on line 1e.														
Over \$500,000 but not over \$1,000,000	\$100,000 plus 15% of the excess over \$500,000.														
Over \$1,000,000 but not over \$1,500,000	\$175,000 plus 10% of the excess over \$1,000,000.														
Over \$1,500,000 but not over \$17,000,000	\$225,000 plus 5% of the excess over \$1,500,000.														
Over \$17,000,000	\$1,000,000.														
g Grassroots nontaxable amount (enter 25% of line 1f).....		86,426.	0.												
h Subtract line 1g from line 1a. If zero or less, enter -0-.....		0.	0.												
i Subtract line 1f from line 1c. If zero or less, enter -0-.....		0.	0.												
j If there is an amount other than zero on either line 1h or line 1i, did the organization file Form 4720 reporting section 4911 tax for this year?.....			<input type="checkbox"/> Yes <input type="checkbox"/> No												

4-Year Averaging Period Under section 501(h)
(Some organizations that made a section 501(h) election do not have to complete all of the five columns below. See the separate instructions for lines 2a through 2f.)

Lobbying Expenditures During 4-Year Averaging Period

Calendar year (or fiscal year beginning in)	(a) 2014	(b) 2015	(c) 2016	(d) 2017	(e) Total
2 a Lobbying nontaxable amount.....	228,258.	261,771.	317,088.	345,705.	1,152,822.
b Lobbying ceiling amount (150% of line 2a, column (e)).....					1,729,233.
c Total lobbying expenditures.....	3,555.	8,873.	10,587.	12,406.	35,421.
d Grassroots nontaxable amount.....	57,065.	65,443.	79,272.	86,426.	288,206.
e Grassroots ceiling amount (150% of line 2d, column (e)).....					432,309.
f Grassroots lobbying expenditures.....	2,992.	202.	1,712.	2,006.	6,912.

Part II-B Complete if the organization is exempt under section 501(c)(3) and has NOT filed Form 5768 (election under section 501(h)).

For each 'Yes' response on lines 1a through 1i below, provide in Part IV a detailed description of the lobbying activity.

	(a)		(b)
	Yes	No	Amount
1 During the year, did the filing organization attempt to influence foreign, national, state or local legislation, including any attempt to influence public opinion on a legislative matter or referendum, through the use of:			
a Volunteers?			
b Paid staff or management (include compensation in expenses reported on lines 1c through 1i)?			
c Media advertisements?			
d Mailings to members, legislators, or the public?			
e Publications, or published or broadcast statements?			
f Grants to other organizations for lobbying purposes?			
g Direct contact with legislators, their staffs, government officials, or a legislative body?			
h Rallies, demonstrations, seminars, conventions, speeches, lectures, or any similar means?			
i Other activities?			
j Total. Add lines 1c through 1i.			
2a Did the activities in line 1 cause the organization to be not described in section 501(c)(3)?			
b If 'Yes,' enter the amount of any tax incurred under section 4912.			
c If 'Yes,' enter the amount of any tax incurred by organization managers under section 4912.			
d If the filing organization incurred a section 4912 tax, did it file Form 4720 for this year?			

Part III-A Complete if the organization is exempt under section 501(c)(4), section 501(c)(5), or section 501(c)(6).

	Yes	No
1 Were substantially all (90% or more) dues received nondeductible by members?	1	
2 Did the organization make only in-house lobbying expenditures of \$2,000 or less?	2	
3 Did the organization agree to carry over lobbying and political campaign activity expenditures from the prior year?	3	

Part III-B Complete if the organization is exempt under section 501(c)(4), section 501(c)(5), or section 501(c)(6) and if either (a) BOTH Part III-A, lines 1 and 2, are answered 'No,' OR (b) Part III-A, line 3, is answered 'Yes.'

1 Dues, assessments and similar amounts from members.	1	
2 Section 162(e) nondeductible lobbying and political expenditures (do not include amounts of political expenses for which the section 527(f) tax was paid).		
a Current year.	2 a	
b Carryover from last year.	2 b	
c Total.	2 c	
3 Aggregate amount reported in section 6033(e)(1)(A) notices of nondeductible section 162(e) dues.	3	
4 If notices were sent and the amount on line 2c exceeds the amount on line 3, what portion of the excess does the organization agree to carryover to the reasonable estimate of nondeductible lobbying and political expenditure next year?	4	
5 Taxable amount of lobbying and political expenditures (see instructions).	5	

Part IV Supplemental Information

Provide the descriptions required for Part I-A, line 1; Part I-B, line 4; Part I-C, line 5; Part II-A (affiliated group list); Part II-A, lines 1 and 2 (see instructions); and Part II-B, line 1. Also, complete this part for any additional information.

**SCHEDULE D
(Form 990)**

Department of the Treasury
Internal Revenue Service

Supplemental Financial Statements

▶ Complete if the organization answered 'Yes' on Form 990, Part IV, line 6, 7, 8, 9, 10, 11a, 11b, 11c, 11d, 11e, 11f, 12a, or 12b.
▶ Attach to Form 990.

▶ Go to www.irs.gov/Form990 for instructions and the latest information.

OMB No. 1545-0047

2017

Open to Public Inspection

Name of the organization

Employer identification number

Transgender Law Center

05-0544006

Part I Organizations Maintaining Donor Advised Funds or Other Similar Funds or Accounts.

Complete if the organization answered 'Yes' on Form 990, Part IV, line 6.

	(a) Donor advised funds	(b) Funds and other accounts
1 Total number at end of year		
2 Aggregate value of contributions to (during year)		
3 Aggregate value of grants from (during year)		
4 Aggregate value at end of year		
5 Did the organization inform all donors and donor advisors in writing that the assets held in donor advised funds are the organization's property, subject to the organization's exclusive legal control?	<input type="checkbox"/> Yes	<input type="checkbox"/> No
6 Did the organization inform all grantees, donors, and donor advisors in writing that grant funds can be used only for charitable purposes and not for the benefit of the donor or donor advisor, or for any other purpose conferring impermissible private benefit?	<input type="checkbox"/> Yes	<input type="checkbox"/> No

Part II Conservation Easements.

Complete if the organization answered 'Yes' on Form 990, Part IV, line 7.

1 Purpose(s) of conservation easements held by the organization (check all that apply).

Preservation of land for public use (e.g., recreation or education) Preservation of a historically important land area

Protection of natural habitat Preservation of a certified historic structure

Preservation of open space

2 Complete lines 2a through 2d if the organization held a qualified conservation contribution in the form of a conservation easement on the last day of the tax year.

	Held at the End of the Tax Year
a Total number of conservation easements	2 a
b Total acreage restricted by conservation easements	2 b
c Number of conservation easements on a certified historic structure included in (a)	2 c
d Number of conservation easements included in (c) acquired after 7/25/06, and not on a historic structure listed in the National Register	2 d

3 Number of conservation easements modified, transferred, released, extinguished, or terminated by the organization during the tax year ▶ _____

4 Number of states where property subject to conservation easement is located ▶ _____

5 Does the organization have a written policy regarding the periodic monitoring, inspection, handling of violations, and enforcement of the conservation easements it holds? Yes No

6 Staff and volunteer hours devoted to monitoring, inspecting, handling of violations, and enforcing conservation easements during the year ▶ _____

7 Amount of expenses incurred in monitoring, inspecting, handling of violations, and enforcing conservation easements during the year ▶ \$ _____

8 Does each conservation easement reported on line 2(d) above satisfy the requirements of section 170(h)(4)(B)(i) and section 170(h)(4)(B)(ii)? Yes No

9 In Part XIII, describe how the organization reports conservation easements in its revenue and expense statement, and balance sheet, and include, if applicable, the text of the footnote to the organization's financial statements that describes the organization's accounting for conservation easements.

Part III Organizations Maintaining Collections of Art, Historical Treasures, or Other Similar Assets.

Complete if the organization answered 'Yes' on Form 990, Part IV, line 8.

1 a If the organization elected, as permitted under SFAS 116 (ASC 958), not to report in its revenue statement and balance sheet works of art, historical treasures, or other similar assets held for public exhibition, education, or research in furtherance of public service, provide, in Part XIII, the text of the footnote to its financial statements that describes these items.

b If the organization elected, as permitted under SFAS 116 (ASC 958), to report in its revenue statement and balance sheet works of art, historical treasures, or other similar assets held for public exhibition, education, or research in furtherance of public service, provide the following amounts relating to these items:

(i) Revenue included on Form 990, Part VIII, line 1. ▶ \$ _____

(ii) Assets included in Form 990, Part X. ▶ \$ _____

2 If the organization received or held works of art, historical treasures, or other similar assets for financial gain, provide the following amounts required to be reported under SFAS 116 (ASC 958) relating to these items:

a Revenue included on Form 990, Part VIII, line 1. ▶ \$ _____

b Assets included in Form 990, Part X. ▶ \$ _____

Part III Organizations Maintaining Collections of Art, Historical Treasures, or Other Similar Assets (continued)

- 3 Using the organization's acquisition, accession, and other records, check any of the following that are a significant use of its collection items (check all that apply):
- a Public exhibition
 - b Scholarly research
 - c Preservation for future generations
 - d Loan or exchange programs
 - e Other _____
- 4 Provide a description of the organization's collections and explain how they further the organization's exempt purpose in Part XIII.
- 5 During the year, did the organization solicit or receive donations of art, historical treasures, or other similar assets to be sold to raise funds rather than to be maintained as part of the organization's collection? Yes No

Part IV Escrow and Custodial Arrangements. Complete if the organization answered 'Yes' on Form 990, Part IV, line 9, or reported an amount on Form 990, Part X, line 21.

- 1 a Is the organization an agent, trustee, custodian or other intermediary for contributions or other assets not included on Form 990, Part X? Yes No
- b If 'Yes,' explain the arrangement in Part XIII and complete the following table:
- | | Amount |
|---------------------------------|--------|
| c Beginning balance | 1 c |
| d Additions during the year | 1 d |
| e Distributions during the year | 1 e |
| f Ending balance | 1 f |
- 2 a Did the organization include an amount on Form 990, Part X, line 21, for escrow or custodial account liability? Yes No
- b If 'Yes,' explain the arrangement in Part XIII. Check here if the explanation has been provided on Part XIII. Yes No

Part V Endowment Funds. Complete if the organization answered 'Yes' on Form 990, Part IV, line 10.

	(a) Current year	(b) Prior year	(c) Two years back	(d) Three years back	(e) Four years back
1 a Beginning of year balance					
b Contributions					
c Net investment earnings, gains, and losses					
d Grants or scholarships					
e Other expenditures for facilities and programs					
f Administrative expenses					
g End of year balance					

2 Provide the estimated percentage of the current year end balance (line 1g, column (a)) held as:

a Board designated or quasi-endowment _____ %

b Permanent endowment _____ %

c Temporarily restricted endowment _____ %

The percentages on lines 2a, 2b, and 2c should equal 100%.

3 a Are there endowment funds not in the possession of the organization that are held and administered for the organization by:

	Yes	No
(i) unrelated organizations	3a(i)	
(ii) related organizations	3a(ii)	

b If 'Yes' on line 3a(ii), are the related organizations listed as required on Schedule R? Yes No

3b Yes No

4 Describe in Part XIII the intended uses of the organization's endowment funds.

Part VI Land, Buildings, and Equipment.

Complete if the organization answered 'Yes' on Form 990, Part IV, line 11a. See Form 990, Part X, line 10.

Description of property	(a) Cost or other basis (investment)	(b) Cost or other basis (other)	(c) Accumulated depreciation	(d) Book value
1 a Land				
b Buildings				
c Leasehold improvements		23,553.	8,621.	14,932.
d Equipment		44,172.	33,289.	10,883.
e Other				
Total. Add lines 1a through 1e. (Column (d) must equal Form 990, Part X, column (B), line 10c.)				25,815.

Part VII Investments – Other Securities.

N/A

Complete if the organization answered 'Yes' on Form 990, Part IV, line 11b. See Form 990, Part X, line 12.

(a) Description of security or category (including name of security)	(b) Book value	(c) Method of valuation: Cost or end-of-year market value
(1) Financial derivatives		
(2) Closely-held equity interests		
(3) Other		
(A) -----		
(B) -----		
(C) -----		
(D) -----		
(E) -----		
(F) -----		
(G) -----		
(H) -----		
(I) -----		
Total. (Column (b) must equal Form 990, Part X, column (B) line 12.)		

Part VIII Investments – Program Related.

N/A

Complete if the organization answered 'Yes' on Form 990, Part IV, line 11c. See Form 990, Part X, line 13.

(a) Description of investment	(b) Book value	(c) Method of valuation: Cost or end-of-year market value
(1)		
(2)		
(3)		
(4)		
(5)		
(6)		
(7)		
(8)		
(9)		
(10)		
Total. (Column (b) must equal Form 990, Part X, column (B) line 13.)		

Part IX Other Assets.

N/A

Complete if the organization answered 'Yes' on Form 990, Part IV, line 11d. See Form 990, Part X, line 15.

(a) Description	(b) Book value
(1)	
(2)	
(3)	
(4)	
(5)	
(6)	
(7)	
(8)	
(9)	
(10)	
Total. (Column (b) must equal Form 990, Part X, column (B) line 15.)	

Part X Other Liabilities.

Complete if the organization answered 'Yes' on Form 990, Part IV, line 11e or 11f. See Form 990, Part X, line 25

(a) Description of liability	(b) Book value
(1) Federal income taxes	
(2) Subtenant Deposit	83,167.
(3)	
(4)	
(5)	
(6)	
(7)	
(8)	
(9)	
(10)	
(11)	
Total. (Column (b) must equal Form 990, Part X, column (B) line 25.)	83,167.

2. Liability for uncertain tax positions. In Part XIII, provide the text of the footnote to the organization's financial statements that reports the organization's liability for uncertain tax positions under FIN 48 (ASC 740). Check here if the text of the footnote has been provided in Part XIII.

Part XI Reconciliation of Revenue per Audited Financial Statements With Revenue per Return.

Complete if the organization answered 'Yes' on Form 990, Part IV, line 12a.

1	Total revenue, gains, and other support per audited financial statements	1	6,414,203.
2	Amounts included on line 1 but not on Form 990, Part VIII, line 12:		
	a Net unrealized gains (losses) on investments	2a	121,267.
	b Donated services and use of facilities	2b	1,115,065.
	c Recoveries of prior year grants	2c	
	d Other (Describe in Part XIII.)	2d	
	e Add lines 2a through 2d	2e	1,236,332.
3	Subtract line 2e from line 1	3	5,177,871.
4	Amounts included on Form 990, Part VIII, line 12, but not on line 1:		
	a Investment expenses not included on Form 990, Part VIII, line 7b	4a	
	b Other (Describe in Part XIII.)	4b	
	c Add lines 4a and 4b	4c	
5	Total revenue. Add lines 3 and 4c . (This must equal Form 990, Part I, line 12.)	5	5,177,871.

Part XII Reconciliation of Expenses per Audited Financial Statements With Expenses per Return.

Complete if the organization answered 'Yes' on Form 990, Part IV, line 12a.

1	Total expenses and losses per audited financial statements	1	5,029,164.
2	Amounts included on line 1 but not on Form 990, Part IX, line 25:		
	a Donated services and use of facilities	2a	1,115,065.
	b Prior year adjustments	2b	
	c Other losses	2c	
	d Other (Describe in Part XIII.)	2d	
	e Add lines 2a through 2d	2e	1,115,065.
3	Subtract line 2e from line 1	3	3,914,099.
4	Amounts included on Form 990, Part IX, line 25, but not on line 1:		
	a Investment expenses not included on Form 990, Part VIII, line 7b	4a	
	b Other (Describe in Part XIII.)	4b	
	c Add lines 4a and 4b	4c	
5	Total expenses. Add lines 3 and 4c . (This must equal Form 990, Part I, line 18.)	5	3,914,099.

Part XIII Supplemental Information.

Provide the descriptions required for Part II, lines 3, 5, and 9; Part III, lines 1a and 4; Part IV, lines 1b and 2b; Part V, line 4; Part X, line 2; Part XI, lines 2d and 4b; and Part XII, lines 2d and 4b. Also complete this part to provide any additional information.

**SCHEDULE G
(Form 990 or 990-EZ)**

Department of the Treasury
Internal Revenue Service

Supplemental Information Regarding Fundraising or Gaming Activities

Complete if the organization answered 'Yes' on Form 990, Part IV, line 17, 18, or 19, or if the organization entered more than \$15,000 on Form 990-EZ, line 6a.

▶ Attach to Form 990 or Form 990-EZ.

▶ Go to www.irs.gov/Form990 for the latest instructions.

OMB No. 1545-0047

2017

Open to Public Inspection

Name of the organization

Transgender Law Center

Employer identification number

05-0544006

Part I Fundraising Activities. Complete if the organization answered 'Yes' on Form 990, Part IV, line 17. Form 990-EZ filers are not required to complete this part.

1 Indicate whether the organization raised funds through any of the following activities. Check all that apply.

- a Mail solicitations
- b Internet and email solicitations
- c Phone solicitations
- d In-person solicitations
- e Solicitation of non-government grants
- f Solicitation of government grants
- g Special fundraising events

2a Did the organization have a written or oral agreement with any individual (including officers, directors, trustees, or key employees listed in Form 990, Part VII) or entity in connection with professional fundraising services? Yes No

b If 'Yes,' list the 10 highest paid individuals or entities (fundraisers) pursuant to agreements under which the fundraiser is to be compensated at least \$5,000 by the organization.

(i) Name and address of individual or entity (fundraiser)	(ii) Activity	(iii) Did fundraiser have custody or control of contributions?		(iv) Gross receipts from activity	(v) Amount paid to (or retained by) fundraiser listed in column (i)	(vi) Amount paid to (or retained by) organization
		Yes	No			
1 Leslie Ann Minot 9724 Peacock Hill Circle Las Vegas NV 89117	Grant Writing		X	3,638,052.	14,699.	3,623,353.
2 Bing Consulting P.O. Box 31345 San Francisco CA 94131	Annual Event		X	114,082.	14,000.	100,082.
3						
4						
5						
6						
7						
8						
9						
10						
Total				3,752,134.	28,699.	3,723,435.

3 List all states in which the organization is registered or licensed to solicit contributions or has been notified it is exempt from registration or licensing.

CA

Part II Fundraising Events. Complete if the organization answered 'Yes' on Form 990, Part IV, line 18, or reported more than \$15,000 of fundraising event contributions and gross income on Form 990-EZ, lines 1 and 6b. List events with gross receipts greater than \$5,000.

REVENUE		(a) Event #1 Annual Event (event type)	(b) Event #2 (event type)	(c) Other events None (total number)	(d) Total events (add column (a) through column (c))	
	1	Gross receipts	114,082.			114,082.
2	Less: Contributions	104,832.			104,832.	
3	Gross income (line 1 minus line 2)	9,250.			9,250.	
DIRECT EXPENSES	4	Cash prizes				
	5	Noncash prizes				
	6	Rent/facility costs	12,630.			12,630.
	7	Food and beverages	32,239.			32,239.
	8	Entertainment				
	9	Other direct expenses	11,018.			11,018.
	10	Direct expense summary. Add lines 4 through 9 in column (d)				55,887.
11	Net income summary. Subtract line 10 from line 3, column (d)				-46,637.	

Part III Gaming. Complete if the organization answered 'Yes' on Form 990, Part IV, line 19, or reported more than \$15,000 on Form 990-EZ, line 6a.

REVENUE		(a) Bingo	(b) Pull tabs/instant bingo/progressive bingo	(c) Other gaming	(d) Total gaming (add column (a) through column (c))
	1	Gross revenue			
DIRECT EXPENSES	2	Cash prizes			
	3	Noncash prizes			
	4	Rent/facility costs			
	5	Other direct expenses			
	6	Volunteer labor	<input type="checkbox"/> Yes _____ % <input type="checkbox"/> No	<input type="checkbox"/> Yes _____ % <input type="checkbox"/> No	<input type="checkbox"/> Yes _____ % <input type="checkbox"/> No
7	Direct expense summary. Add lines 2 through 5 in column (d)				
8	Net gaming income summary. Subtract line 7 from line 1, column (d)				

9 Enter the state(s) in which the organization conducts gaming activities: _____

a Is the organization licensed to conduct gaming activities in each of these states? Yes No

b If 'No,' explain: _____

10 a Were any of the organization's gaming licenses revoked, suspended, or terminated during the tax year? Yes No

b If 'Yes,' explain: _____

- 11** Does the organization conduct gaming activities with nonmembers? Yes No
- 12** Is the organization a grantor, beneficiary or trustee of a trust, or a member of a partnership or other entity formed to administer charitable gaming? Yes No

13 Indicate the percentage of gaming activity conducted in:

a The organization's facility	13 a	%
b An outside facility	13 b	%

14 Enter the name and address of the person who prepares the organization's gaming/special events books and records:

Name ▶ _____

Address ▶ _____

- 15 a** Does the organization have a contract with a third party from whom the organization receives gaming revenue? Yes No
- b** If 'Yes,' enter the amount of gaming revenue received by the organization ▶ \$ _____ and the amount of gaming revenue retained by the third party ▶ \$ _____
- c** If 'Yes,' enter name and address of the third party:

Name ▶ _____

Address ▶ _____

16 Gaming manager information:

Name ▶ _____

Gaming manager compensation ▶ \$ _____

Description of services provided ▶ _____

Director/officer Employee Independent contractor

- 17** Mandatory distributions:
- a** Is the organization required under state law to make charitable distributions from the gaming proceeds to retain the state gaming license? Yes No
- b** Enter the amount of distributions required under state law to be distributed to other exempt organizations or spent in the organization's own exempt activities during the tax year ▶ \$ _____

Part IV Supplemental Information. Provide the explanations required by Part I, line 2b, columns (iii) and (v); and Part III, lines 9, 9b, 10b, 15b, 15c, 16, and 17b, as applicable. Also provide any additional information. See instructions.

Part I, Line 2b - Fundraiser Additional Information

Leslie Ann Minot, 9724 Peacock Hill Circle, Las Vegas, NV 89117; Bing Conculnting Services, 3361 Mission Street, San Francisco, CA 94110

**SCHEDULE I
(Form 990)**

Department of the Treasury
Internal Revenue Service

**Grants and Other Assistance to Organizations,
Governments, and Individuals in the United States**

Complete if the organization answered 'Yes' on Form 990, Part IV, line 21 or 22.
▶ Attach to Form 990.

▶ Go to www.irs.gov/Form990 for the latest information

OMB No. 1545-0047

2017

**Open to Public
Inspection**

Name of the organization **Transgender Law Center**

Employer identification number
05-0544006

Part I General Information on Grants and Assistance

- 1 Does the organization maintain records to substantiate the amount of the grants or assistance, the grantees' eligibility for the grants or assistance, and the selection criteria used to award the grants or assistance? **Yes** **No**
- 2 Describe in Part IV the organization's procedures for monitoring the use of grant funds in the United States.

Part II Grants and Other Assistance to Domestic Organizations and Domestic Governments. Complete if the organization answered 'Yes' on Form 990, Part IV, line 21, for any recipient that received more than \$5,000. Part II can be duplicated if additional space is needed.

1 (a) Name and address of organization or government	(b) EIN	(c) IRC section (if applicable)	(d) Amount of cash grant	(e) Amount of non-cash assistance	(f) Method of valuation (book, FMV, appraisal, other)	(g) Description of noncash assistance	(h) Purpose of grant or assistance
(1) <u>Gender & Sexualities Alliance</u> <u>1714 Franklin Street #100</u> <u>Oakland, CA 94612</u>	20-5367752	501c3	22,398.	0.		Support for TRUTH program	
(2) -----							
(3) -----							
(4) -----							
(5) -----							
(6) -----							
(7) -----							
(8) -----							

2 Enter total number of section 501(c)(3) and government organizations listed in the line 1 table ▶ **1**

3 Enter total number of other organizations listed in the line 1 table ▶ **0**

Part III Grants and Other Assistance to Domestic Individuals. Complete if the organization answered 'Yes' on Form 990, Part IV, line 22. Part III can be duplicated if additional space is needed.

(a) Type of grant or assistance	(b) Number of recipients	(c) Amount of cash grant	(d) Amount of noncash assistance	(e) Method of valuation (book, FMV, appraisal, other)	(f) Description of noncash assistance
1					
2					
3					
4					
5					
6					
7					

Part IV Supplemental Information. Provide the information required in Part I, line 2; Part III, column (b); and any other additional information.

Part IV - Additional Supplemental Information

TLC works closely with our grant partners to review and monitor the use of our grants, through financial reporting of grant expenditures to each other.

**SCHEDULE M
(Form 990)**

Noncash Contributions

OMB No. 1545-0047

2017

**Open to Public
Inspection**

Department of the Treasury
Internal Revenue Service

- ▶ **Complete if the organizations answered 'Yes' on Form 990, Part IV, lines 29 or 30.**
- ▶ **Attach to Form 990.**
- ▶ **Go to www.irs.gov/Form990 for the latest information.**

Name of the organization Transgender Law Center	Employer identification number 05-0544006
---	---

Part I Types of Property

	(a) Check if applicable	(b) Number of contributions or items contributed	(c) Noncash contribution amounts reported on Form 990, Part VIII, line 1g	(d) Method of determining noncash contribution amounts
1 Art – Works of art				
2 Art – Historical treasures				
3 Art – Fractional interests				
4 Books and publications				
5 Clothing and household goods				
6 Cars and other vehicles				
7 Boats and planes				
8 Intellectual property				
9 Securities – Publicly traded		852	132,014	FMV
10 Securities – Closely held stock				
11 Securities – Partnership, LLC, or trust interests				
12 Securities – Miscellaneous				
13 Qualified conservation contribution – Historic structures				
14 Qualified conservation contribution – Other				
15 Real estate – Residential				
16 Real estate – Commercial				
17 Real estate – Other				
18 Collectibles				
19 Food inventory				
20 Drugs and medical supplies				
21 Taxidermy				
22 Historical artifacts				
23 Scientific specimens				
24 Archeological artifacts				
25 Other ▶ (Tickets)		4	2,300	retail price
26 Other ▶ (Gift cards)		4	240	retail price
27 Other ▶ (.....)				
28 Other ▶ (.....)				

29 Number of Forms 8283 received by the organization during the tax year for contributions for which the organization completed Form 8283, Part IV, Donee Acknowledgement **29**

		Yes	No
30a During the year, did the organization receive by contribution any property reported in Part I, lines 1 through 28, that it must hold for at least three years from the date of the initial contribution, and which isn't required to be used for exempt purposes for the entire holding period?	30 a		X
b If 'Yes,' describe the arrangement in Part II.			
31 Does the organization have a gift acceptance policy that requires the review of any nonstandard contributions?	31		X
32a Does the organization hire or use third parties or related organizations to solicit, process, or sell noncash contributions?	32 a		X
b If 'Yes,' describe in Part II.			
33 If the organization didn't report an amount in column (c) for a type of property for which column (a) is checked, describe in Part II.			

BAA For Paperwork Reduction Act Notice, see the Instructions for Form 990.

Schedule M (Form 990) (2017)

Part II Supplemental Information. Provide the information required by Part I, lines 30b, 32b, and 33, and whether the organization is reporting in Part I, column (b), the number of contributions, the number of items received, or a combination of both. Also complete this part for any additional information.

SCHEDULE O
(Form 990 or 990-EZ)

Department of the Treasury
Internal Revenue Service

Name of the organization

Supplemental Information to Form 990 or 990-EZ

Complete to provide information for responses to specific questions on
Form 990 or 990-EZ or to provide any additional information.
▶ Attach to Form 990 or 990-EZ.

▶ Go to www.irs.gov/Form990 for the latest information.

OMB No. 1545-0047

2017

**Open to Public
Inspection**

Transgender Law Center

Employer identification number

05-0544006

Form 990, Part III, Line 4a - Program Service Accomplishments

LEGAL PROGRAM Our Legal Program worked to secure and protect comprehensive legal protections for transgender and gender non-conforming people through targeted policy advocacy, litigation and legal advocacy, and training/technical assistance. Legal accomplishments and progress included the following: We secured a groundbreaking victory at the Seventh Circuit Court of Appeals representing Ash Whitaker, a transgender high school student in Wisconsin who is being denied access to the restroom consistent with his gender identity. The school district has decided not to appeal to the U.S. Supreme Court, so this victory stands. In September 2016, with the National Center for Lesbian Rights (NCLR), we filed a federal lawsuit against Rady's Children's Hospital in San Diego, California, alleging discrimination in violation of the ACA and California law as well as deceptive and unfair business practices. A 15-year-old transgender boy who was admitted to Rady's due to suicidal ideation was mistreated and repeatedly misgendered by the hospital despite his and his mother's advocacy, and was released because his condition had worsened. Shortly after, he died by suicide. In September 2017, a Federal Court ruled that the Affordable Care Act's sex discrimination protections apply to transgender youth. The Court also ruled that the boy's mother can seek emotional damages on behalf of her son. In October 2017, TLC and NCLR filed an amended complaint based on the September ruling. In May 2017, a groundbreaking decision was issued that gender dysphoria cannot be excluded from the ADA. TLC helped write and submit a significant amicus brief in this case. This ruling, the first of its kind in the country, lays a foundation for transgender people to pursue broad civil rights protections across a range of areas, regardless of specific state nondiscrimination protections. Additionally, our Trans Immigrant Defense Effort (TIDE) recruited and trained pro bono lawyers to provide legal representation to TGNC immigrants in immigration petitions and court proceedings and

Name of the organization

Transgender Law Center

Employer identification number

05-0544006

Form 990, Part III, Line 4a - Program Service Accomplishments

works with grassroots LGBT immigrant groups to develop a community-led deportation defense model. In September 2017, we developed a resource with tips and tools for preparing for raids and interacting with ICE for TGNC immigrants and a resource to prepare TGNC immigrants for credible/reasonable fear interviews to help ensure that they receive a positive credible fear determination which allows them a chance to apply for asylum in the future. We prioritized the creation of this resource because of the administration push for the use of expedited removal against immigrants. We are also working on a guide for attorneys representing TGNC people and a pro se (self-representation) guide for TGNC detainees, who are often unable to secure timely, knowledgeable representation. TIDE represents an investment in defending and supporting the leadership of TGNC migrants by building out community-based responses to state violence, incarceration, and lack of legal representation that focus various forms of expertise and resources on developing an infrastructure to sustain and further this work.

Form 990, Part III, Line 4b - Program Service Accomplishments

Other programs: TRUTH, our collaborative program with GSA Network to support trans youth in taking control of their stories, building supportive peer networks, and mobilizing on issues that matter to them, succeeded in establishing and sustaining Youth Councils at the national level (9 members), in California (9 members), and in the South (7 members) through 2017. These councils guide TRUTH and are responsible for the development of regional projects and national media campaigns, the creation of peer support resources, and rapid response in moments when TGNC youth voice and leadership are critical. The TRUTH councils have worked on story-based trans 101 trainings for local schools and communities, and TRUTH videos have been incorporated into many trainings. There is a large social media component, primarily targeting young people, through selfie campaigns, Twitter town halls, and other efforts led by

Name of the organization

Transgender Law Center

Employer identification number

05-0544006

Form 990, Part III, Line 4b - Program Service Accomplishments

the TRUTH councils. While these councils were successful, they did not allow the kind of national reach that was needed, and could not be scaled up in this format without an enormous increase in staffing. In 2018, TRUTH shifted structure to a larger national council that divides into regional committees for local work, and launched an application process for this new TRUTH cohort. TRUTH received over 200 applications and has now completed the selection of the new 30-person council representing youth from every region of the country. In January 2018 we formally launched a new web site for TRUTH: <https://ourtranstruth.org/>. TLC@SONG's Grapevine Survey of TGNC people in the South ran from Nov. 2017-January 31, 2018 and secured 200 responses. Findings will be released in summer 2018. This survey builds on the 2017 "listening tour" to meet with trans community members in key cities. TLC has continued to support local organizing, and has leveraged our NTI to help strengthen movement leadership in Southern communities. Coordination between organizing and legal work in the South has also been strengthened, particularly through Staff Attorney Shawn Meerkamper's engagement with partners at Out South in September 2017. The Black LGBTQIA+ Migrant Project (BLMP) was launched in Fall 2017 through a Soros Justice Fellowship.

Form 990, Part III, Line 4c - Program Service Accomplishments

POSITIVELY TRANS PROGRAM Our Positively Trans Program's National Advisory Board has grown significantly and is now at 18 members. In March 2017, Positively Trans (T+) released the second and third reports based on our groundbreaking national needs assessment. The second report, Some Kind of Strength takes on the problem that studies of transgender people living with HIV rarely go beyond transmission risk and surveillance data, hindering a holistic understanding of the lives of trans people affected by AIDS that could identify the role of violence and discrimination in creating the conditions that result in the extreme HIV prevalence rates. The third

Name of the organization

Transgender Law Center

Employer identification number

05-0544006

Form 990, Part III, Line 4c - Program Service Accomplishments

report, See Us as People, addressed the shortcomings of policies that would protect transgender people in theory, but fall short in practice because of a lack of enforcement. Based on the success of the national needs assessment, we are working with members of Positively Trans in Southern Florida, Detroit, and New Orleans to conduct local needs assessments. We organized three digital storytelling workshops during 2017, including one specifically for people on the transmasculine spectrum.

Form 990, Part III, Line 4d - Other Program Services Description

MOVEMENT BUILDING PROGRAMS Our Movement Building Programs worked to increase social acceptance and support for TGNC people and policies through leadership development, coalition building, and public education. Our National Training Institute (NTI) conducted 6 'full' one- or two-day trainings, including a training for 10 HIV+ trans leaders from across the country who are part of our Positively Trans (T+) National Advisory Board in April in New York; a training for 15 Black trans activists, in the context of the Black Trans Advocacy Conference in Dallas, TX in April; a Spanish-Language training for 15 activists in Houston, TX in May; a training in Portland, OR in August reaching 10 TGNC leaders from the Northwest; a training for 16 TGNC youth of color in the East Bay of the San Francisco Bay Area, in partnership with the GSA Network in September; and a training in December for 16 activists from Alaska, Montana, and Washington State. We also conducted leadership trainings and workshops at state and regional conferences, leadership convenings and events targeting the Midwest and South, including an intersectional organizing workshop for 50 participants at the Texas Leadership Institute in February 2017; a community organizing training for 20 TGNC people at the National Asian/Pacific Islander Transfusion TransMasculine Gathering, in August; a movement strategy and advocacy training for 20 TGNC people in Washington State in August; and a Southern LGBT Leadership Convening in partnership with Southerners on New Ground reaching 20 TGNC

Name of the organization

Transgender Law Center

Employer identification number

05-0544006

Form 990, Part III, Line 4d - Other Program Services Description

people. We continued to provide support to NTI graduates after the in-person training, through monthly calls and technical assistance as needed. They have been strengthened in existing campaigns and in creating new community campaigns and services. They have also benefitted from the monthly conference calls maintaining support networks and using the infrastructure to connect with one another and sustain their activism, so the model is just dependent on relationships with TLC. The National TGNC Coalition met in November 2017 and again in early 2018 to map out coalition work for the upcoming year. Fifteen (15) people attended each meeting and voted to approve a formal membership structure and move forward with a TGNC decriminalization campaign that will be launched in 2018 and expand over the next three years.

Form 990, Part VI, Line 11b - Form 990 Review Process

The Board reviews an electronic copy of the 990 after it has been reviewed by the Executive Director and Treasurer with the preparer. Each member of the Board is provided with an electronic copy of the draft 990 document, before it is filed.

Form 990, Part VI, Line 12c - Explanation of Monitoring and Enforcement of Conflicts

Each member of the Board is required to execute a conflict of interest statement upon joining the Board and annually thereafter.

Form 990, Part VI, Line 15a - Compensation Review & Approval Process - CEO & Top Management

The Executive Director's salary review is based on a survey of regional and industry comparable salaries, as benchmarked by nonprofit compensation studies, and approved by a committee of the Board. This process was last conducted in 2016.

Form 990, Part VI, Line 15b - Compensation Review & Approval Process - Officers & Key Employees

Senior staff salaries based on survey of regional and industry comparable salaries, as benchmarked by nonprofit compensation studies. This process was last conducted in

Name of the organization

Transgender Law Center

Employer identification number

05-0544006

Form 990, Part VI, Line 15b - Compensation Review & Approval Process - Officers & Key Employees (continued)

2016.

Form 990, Part VI, Line 19 - Other Organization Documents Publicly Available

The Organization makes its governing documents, conflict of interest policy, and financial statements available to the public upon request.

California Exempt Organization Annual Information Return

Calendar Year 2017 or fiscal year beginning (mm/dd/yyyy), and ending (mm/dd/yyyy)

Corporation/Organization name: TRANSGENDER LAW CENTER. California corporation number: 2627930. FEIN: 05-0544006. Street address: PO BOX 70976, OAKLAND, CA 94612.

Part I Complete Part I unless not required to file this form. See General Information B and C. A First Return [X] No. B Amended Return [X] Yes. C IRC Section 4947(a)(1) trust [X] No. J If exempt under R&TC Section 23701d, has the organization engaged in political activities? [X] Yes. K Is the organization exempt under R&TC Section 23701g? [X] No.

Table with 17 rows for Receipts and Revenues, Expenses, and Filing Fee. Row 1: Gross sales or receipts from other sources. Total: 582,365. Row 3: Gross contributions, gifts, grants, and similar amounts received. Total: 4,845,084. Row 4: Total gross receipts for filing requirement test. Total: 5,427,449. Row 6: Cost or other basis, and sales expenses of assets sold. Total: 193,691. Row 7: Total costs. Total: 193,691. Row 8: Total gross income. Total: 5,233,758. Row 9: Total expenses and disbursements. Total: 3,969,986. Row 10: Excess of receipts over expenses and disbursements. Total: 1,263,772. Row 17: Balance due. Total: 0.

May the FTB discuss this return with the preparer shown above? See instructions. [X] Yes [] No

Part II Organizations with gross receipts of more than \$50,000 and private foundations regardless of amount of gross receipts – complete Part II or furnish substitute information.

Receipts from Other Sources	1	Gross sales or receipts from all business activities. See instructions.	●	1	
	2	Interest	●	2	
	3	Dividends	●	3	
	4	Gross rents	●	4	121,587.
	5	Gross royalties	●	5	
	6	Gross amount received from sale of assets (See Instructions)	●	6	191,357.
	7	Other income. Attach schedule. SEE STATEMENT 1	●	7	269,421.
	8	Total gross sales or receipts from other sources. Add line 1 through line 7. Enter here and on Side 1, Part I, line 1.		8	582,365.
Expenses and Disbursements	9	Contributions, gifts, grants, and similar amounts paid. Attach schedule. SEE STATEMENT 2	●	9	22,398.
	10	Disbursements to or for members	●	10	
	11	Compensation of officers, directors, and trustees. Attach schedule. SEE STMT 3	●	11	206,613.
	12	Other salaries and wages	●	12	1,577,272.
	13	Interest	●	13	
	14	Taxes	●	14	146,921.
	15	Rents	●	15	428,956.
	16	Depreciation and depletion (See instructions)	●	16	16,858.
	17	Other Expenses and Disbursements. Attach schedule. SEE STATEMENT 4	●	17	1,570,968.
	18	Total expenses and disbursements. Add line 9 through line 17. Enter here and on Side 1, Part I, line 9.		18	3,969,986.

Schedule L Balance Sheet		Beginning of taxable year		End of taxable year	
		(a)	(b)	(c)	(d)
Assets					
1	Cash		598,582.	●	559,768.
2	Net accounts receivable		413,325.	●	687,965.
3	Net notes receivable			●	
4	Inventories			●	
5	Federal and state government obligations			●	
6	Investments in other bonds			●	
7	Investments in stock			●	
8	Mortgage loans			●	
9	Other investments. Attach schedule		818,221.	●	1,944,309.
10a	Depreciable assets	67,725.		67,725.	
b	Less accumulated depreciation	25,051.	42,674.	25,815.	41,910.
11	Land			●	
12	Other assets. Attach schedule. STM 5		166,181.	●	295,458.
13	Total assets		2,038,983.		3,529,410.
Liabilities and net worth					
14	Accounts payable		253,169.	●	298,256.
15	Contributions, gifts, or grants payable			●	
16	Bonds and notes payable			●	
17	Mortgages payable			●	
18	Other liabilities. Attach schedule. STM 6		36,423.		49,980.
19	Capital stock or principal fund		1,749,391.	●	3,181,174.
20	Paid-in or capital surplus. Attach reconciliation			●	
21	Retained earnings or income fund			●	
22	Total liabilities and net worth		2,038,983.		3,529,410.

Schedule M-1 Reconciliation of income per books with income per return			
Do not complete this schedule if the amount on Schedule L, line 13, column (d), is less than \$50,000.			
1	Net income per books	●	1,263,772.
2	Federal income tax	●	
3	Excess of capital losses over capital gains	●	
4	Income not recorded on books this year. Attach schedule	●	
5	Expenses recorded on books this year not deducted in this return. Attach schedule	●	
6	Total. Add line 1 through line 5.		1,263,772.
7	Income recorded on books this year not included in this return. Attach schedule	●	
8	Deductions in this return not charged against book income this year. Attach schedule	●	
9	Total. Add line 7 and line 8		
10	Net income per return. Subtract line 9 from line 6.		1,263,772.

Schedule B
(Form 990, 990-EZ,
or 990-PF)

Department of the Treasury
Internal Revenue Service

California Copy
Schedule of Contributors

▶ **Attach to Form 990, Form 990-EZ, or Form 990-PF.**
▶ **Go to www.irs.gov/Form990 for the latest information.**

OMB No. 1545-0047

2017

Name of the organization

Transgender Law Center

Employer identification number

05-0544006

Organization type (check one):

Filers of:

Form 990 or 990-EZ

Section:

501(c)(3) (enter number) organization

4947(a)(1) nonexempt charitable trust **not** treated as a private foundation

527 political organization

Form 990-PF

501(c)(3) exempt private foundation

4947(a)(1) nonexempt charitable trust treated as a private foundation

501(c)(3) taxable private foundation

Check if your organization is covered by the **General Rule** or a **Special Rule**.

Note. Only a section 501(c)(7), (8), or (10) organization can check boxes for both the General Rule and a Special Rule. See instructions.

General Rule

For an organization filing Form 990, 990-EZ, or 990-PF that received, during the year, contributions totaling \$5,000 or more (in money or property) from any one contributor. Complete Parts I and II. See instructions for determining a contributor's total contributions.

Special Rules

For an organization described in section 501(c)(3) filing Form 990 or 990-EZ that met the 33-1/3% support test of the regulations under sections 509(a)(1) and 170(b)(1)(A)(vi), that checked Schedule A (Form 990 or 990-EZ), Part II, line 13, 16a, or 16b, and that received from any one contributor, during the year, total contributions of the greater of (1) \$5,000 or (2) 2% of the amount on (i) Form 990, Part VIII, line 1h; or (ii) Form 990-EZ, line 1. Complete Parts I and II.

For an organization described in section 501(c)(7), (8), or (10) filing Form 990 or 990-EZ that received from any one contributor, during the year, total contributions of more than \$1,000 *exclusively* for religious, charitable, scientific, literary, or educational purposes, or for the prevention of cruelty to children or animals. Complete Parts I, II, and III.

For an organization described in section 501(c)(7), (8), or (10) filing Form 990 or 990-EZ that received from any one contributor, during the year, contributions *exclusively* for religious, charitable, etc., purposes, but no such contributions totaled more than \$1,000. If this box is checked, enter here the total contributions that were received during the year for an *exclusively* religious, charitable, etc., purpose. Don't complete any of the parts unless the **General Rule** applies to this organization because it received *nonexclusively* religious, charitable, etc., contributions totaling \$5,000 or more during the year ▶ \$ _____

Caution. An organization that isn't covered by the General Rule and/or the Special Rules doesn't file Schedule B (Form 990, 990-EZ, or 990-PF), but it **must** answer 'No' on Part IV, line 2, of its Form 990; or check the box on line H of its Form 990-EZ or on its Form 990-PF, Part I, line 2, to certify that it doesn't meet the filing requirements of Schedule B (Form 990, 990-EZ, or 990-PF).

BAA For Paperwork Reduction Act Notice, see the instructions for Form 990, 990-EZ, or 990-PF.

Schedule B (Form 990, 990-EZ, or 990-PF) (2017)

Name of organization Transgender Law Center	Employer identification number 05-0544006
--	--

Part I Contributors (see instructions). Use duplicate copies of Part I if additional space is needed.

(a) Number	(b) Name, address, and ZIP + 4	(c) Total contributions	(d) Type of contribution
1	Elton John AIDS Foundation 584 Broadway, Suite 906 New York, NY 10012	\$ 200,000.	Person <input checked="" type="checkbox"/> Payroll <input type="checkbox"/> Noncash <input type="checkbox"/> (Complete Part II for noncash contributions.)
2	Tides Foundation PO Box 29903 San Francisco, CA 94129-0903	\$ 400,000.	Person <input checked="" type="checkbox"/> Payroll <input type="checkbox"/> Noncash <input type="checkbox"/> (Complete Part II for noncash contributions.)
3	Wellspring Advisors 1441 Broadway, Suite 1600 New York, NY 10018-1905	\$ 450,000.	Person <input checked="" type="checkbox"/> Payroll <input type="checkbox"/> Noncash <input type="checkbox"/> (Complete Part II for noncash contributions.)
4	California Wellness Foundation 6320 Canoga Ave., Ste. 1700 Woodland Hills, CA 91367	\$ 350,000.	Person <input checked="" type="checkbox"/> Payroll <input type="checkbox"/> Noncash <input type="checkbox"/> (Complete Part II for noncash contributions.)
5	Open Society Foundations 224 W. 57th Street New York, NY 10019	\$ 260,250.	Person <input checked="" type="checkbox"/> Payroll <input type="checkbox"/> Noncash <input type="checkbox"/> (Complete Part II for noncash contributions.)
6	Levi Strauss Foundation 1155 Battery Street San Francisco, CA 94111	\$ 225,533.	Person <input checked="" type="checkbox"/> Payroll <input type="checkbox"/> Noncash <input type="checkbox"/> (Complete Part II for noncash contributions.)

Name of organization Transgender Law Center	Employer identification number 05-0544006
--	--

Part I Contributors (see instructions). Use duplicate copies of Part I if additional space is needed.

(a) Number	(b) Name, address, and ZIP + 4	(c) Total contributions	(d) Type of contribution
7	NEO Philanthropy, Inc. 45 W. 36th Street, 6th Fl. New York, NY 10018	\$ 150,000.	Person <input checked="" type="checkbox"/> Payroll <input type="checkbox"/> Noncash <input type="checkbox"/> (Complete Part II for noncash contributions.)
8	The California Endowment 1000 N. Alameda Street Los Angeles, CA 90012	\$ 117,650.	Person <input checked="" type="checkbox"/> Payroll <input type="checkbox"/> Noncash <input type="checkbox"/> (Complete Part II for noncash contributions.)
9	Borealis Philanthropy 126 N. 3rd St., Ste. 500 Minneapolis, MN 55401	\$ 102,100.	Person <input checked="" type="checkbox"/> Payroll <input type="checkbox"/> Noncash <input type="checkbox"/> (Complete Part II for noncash contributions.)
10	Gill Foundation 1550 Wewatta Street Denver, CO 80202	\$ 100,000.	Person <input checked="" type="checkbox"/> Payroll <input type="checkbox"/> Noncash <input type="checkbox"/> (Complete Part II for noncash contributions.)
11	GlaxoSmithKline 5 Crescent Drive Philadelphia, PA 19112	\$ 200,000.	Person <input checked="" type="checkbox"/> Payroll <input type="checkbox"/> Noncash <input type="checkbox"/> (Complete Part II for noncash contributions.)
12	NoVo Foundation 535 Fifth Ave., 33rd Fl. New York, NY 10017	\$ 280,000.	Person <input checked="" type="checkbox"/> Payroll <input type="checkbox"/> Noncash <input type="checkbox"/> (Complete Part II for noncash contributions.)

Name of organization Transgender Law Center	Employer identification number 05-0544006
--	--

Part II **Noncash Property** (see instructions). Use duplicate copies of Part II if additional space is needed.

(a) No. from Part I	(b) Description of noncash property given	(c) FMV (or estimate) (See instructions.)	(d) Date received
-----	N/A ----- ----- -----	\$-----	-----
-----	----- ----- -----	\$-----	-----
-----	----- ----- -----	\$-----	-----
-----	----- ----- -----	\$-----	-----
-----	----- ----- -----	\$-----	-----
-----	----- ----- -----	\$-----	-----
-----	----- ----- -----	\$-----	-----

Name of organization Transgender Law Center	Employer identification number 05-0544006
---	--

Part III Exclusively religious, charitable, etc., contributions to organizations described in section 501(c)(7), (8), or (10) that total more than \$1,000 for the year from any one contributor. Complete columns (a) through (e) and the following line entry. For organizations completing Part III, enter the total of *exclusively* religious, charitable, etc., contributions of **\$1,000 or less** for the year. (Enter this information once. See instructions.) ▶ \$ _____ *N/A*
 Use duplicate copies of Part III if additional space is needed.

(a) No. from Part I	(b) Purpose of gift	(c) Use of gift	(d) Description of how gift is held
N/A			

(e) Transfer of gift	
Transferee's name, address, and ZIP + 4	Relationship of transferor to transferee

(a) No. from Part I	(b) Purpose of gift	(c) Use of gift	(d) Description of how gift is held

(e) Transfer of gift	
Transferee's name, address, and ZIP + 4	Relationship of transferor to transferee

(a) No. from Part I	(b) Purpose of gift	(c) Use of gift	(d) Description of how gift is held

(e) Transfer of gift	
Transferee's name, address, and ZIP + 4	Relationship of transferor to transferee

(a) No. from Part I	(b) Purpose of gift	(c) Use of gift	(d) Description of how gift is held

(e) Transfer of gift	
Transferee's name, address, and ZIP + 4	Relationship of transferor to transferee

Transgender Law Center

05-0544006

Statement 1
Form 199, Part II, Line 7
Other Income

Income from Special Events.....	\$	9,250.
Miscellaneous.....		13,474.
Other Investment Income.....		24,271.
Program Service Revenue.....		222,426.
	Total \$	<u>269,421.</u>

Statement 2
Form 199, Part II, Line 9
Contributions, Gifts, Grants, and Similar Amounts Paid

Donee's Name:	Gender & Sexualities Alliance	
Donee's Street Address:	1714 Franklin Street #100	
Donee's City, State, ZIP:	Oakland, CA 94612	
Amount Given:		22,398.
Description of Property:	Support for TRUTH program	
	Total \$	<u>22,398.</u>

Statement 3
Form 199, Part II, Line 11
Compensation of Officers, Directors, Trustees and Key Employees

Current Officers:

Name and Address	Title and Average Hours Per Week Devoted	Total Compen- sation	Contri- bution to EBP & DC	Expense Account/ Other
Min Matson, Board Chair & PO BOX 70976 Oakland, 94 94612	Director 2.00	\$ 0.	\$ 0.	\$ 0.
Melanie Rowen, Board Vice Ch.& PO BOX 70976 Oakland, 94 94612	Director 2.00	0.	0.	0.
Alan Francisco-Tipgos, Treas.& PO BOX 70976 Oakland, 94 94612	Director 2.00	0.	0.	0.
Bobbi Dalley PO BOX 70976 Oakland, CA 94612	Director 2.00	0.	0.	0.
Brielle Darynn PO BOX 70976 Oakland, CA 94612	Director 2.00	0.	0.	0.

Transgender Law Center

05-0544006

Statement 3 (continued)
Form 199, Part II, Line 11
Compensation of Officers, Directors, Trustees and Key Employees

Current Officers:

Name and Address	Title and Average Hours Per Week Devoted	Total Compen- sation	Contri- bution to EBP & DC	Expense Account/ Other
Mat dos Santos PO BOX 70976 Oakland, CA 94612	Director 2.00	\$ 0.	\$ 0.	\$ 0.
Rose Hayes PO BOX 70976 Oakland, CA 94612	Director 2.00	0.	0.	0.
Chinyere Ezie PO BOX 70976 Oakland, CA 94612	Director 2.00	0.	0.	0.
Bishop Tonyia Rawls PO BOX 70976 Oakland, CA 94612	Director 2.00	0.	0.	0.
Theresa Witherspoon PO BOX 70976 Oakland, CA 94612	Director 2.00	0.	0.	0.
Dr. Marci Bowers PO BOX 70976 Oakland, CA 94612	Director 2.00	0.	0.	0.
Kris Hayashi PO BOX 70976 Oakland, CA 94612	Executive Dir. 40.00	109,168.	0.	9,168.
Rachel Kahn, Finance/Oper. PO BOX 70976 Oakland, CA 94612	Director 40.00	97,445.	0.	12,488.
Evelyn Rios, Secretary & PO BOX 70976 Oakland, CA 94612	Director 2.00	0.	0.	0.
Morgan Darby PO BOX 70976 Oakland, CA 94612	Director 2.00	0.	0.	0.
Total		<u>\$ 206,613.</u>	<u>\$ 0.</u>	<u>\$ 21,656.</u>

Statement 4
Form 199, Part II, Line 17
Other Expenses

Accounting Fees.....	\$	77,587.
Advertising and Promotion.....		64,584.
Conferences, Conventions, and Meetings.....		119,298.
Information Technology.....		102,443.
Insurance.....		24,060.
Legal Fees.....		39,426.
Miscellaneous.....		68,903.
Office Expenses.....		93,657.
Other Employee Benefit.....		163,260.
Other fees.....		330,911.
Professional development.....		29,678.
Professional Fundraising Fees.....		28,699.
Special Event Expenses.....		55,887.
Staff & volunteer appreciation.....		6,888.
Travel.....		365,687.
	Total	<u>\$ 1,570,968.</u>

Statement 5
Form 199, Schedule L, Line 12
Other Assets

.....		295,458.
	Total	<u>\$ 295,458.</u>

Statement 6
Form 199, Schedule L, Line 18
Other Liabilities

.....		49,980.
	Total	<u>\$ 49,980.</u>

IN

MAIL TO:
 Registry of Charitable Trusts
 P.O. Box 903447
 Sacramento, CA 94203-4470
 Telephone: (916) 445-2021

WEBSITE ADDRESS:
<http://ag.ca.gov/charities/>

ANNUAL REGISTRATION RENEWAL FEE REPORT TO ATTORNEY GENERAL OF CALIFORNIA

Sections 12586 and 12587, California Government Code
 11 Cal. Code Regs. sections 301-307, 311 and 312

Failure to submit this report annually no later than four months and fifteen days after the end of the organization's accounting period may result in the loss of tax exemption and the assessment of a minimum tax of \$800, plus interest, and/or fines or filing penalties as defined in Government Code Section 12586.1. IRS extensions will be honored.



State Charity Registration Number <u>129957</u> TRANSGENDER LAW CENTER <small>Name of Organization</small> <u>PO BOX 70976</u> <small>Address (Number and Street)</small> <u>OAKLAND, CA 94612</u> <small>City or Town State ZIP Code</small>	Check if: <input type="checkbox"/> Change of address <input type="checkbox"/> Amended report Corporate or Organization No. <u>2627930</u> Federal Employer I.D. No. <u>05-0544006</u>
--	--

ANNUAL REGISTRATION RENEWAL FEE SCHEDULE (11 Cal. Code Regs. sections 301-307, 311 and 312)
 Make Check Payable to Attorney General's Registry of Charitable Trusts

Gross Annual Revenue	Fee	Gross Annual Revenue	Fee	Gross Annual Revenue	Fee
Less than \$25,000	0	Between \$100,001 and \$250,000	\$50	Between \$1,000,001 and \$10 million	\$150
Between \$25,000 and \$100,000	\$25	Between \$250,001 and \$1 million	\$75	Between \$10,000,001 and \$50 million	\$225
				Greater than \$50 million	\$300

PART A – ACTIVITIES

For your most recent full accounting period (beginning 1/01/17 ending 12/31/17) list:
 Gross annual revenue \$ 5,177,871. Total assets \$ 3,529,410.

PART B – STATEMENTS REGARDING ORGANIZATION DURING THE PERIOD OF THIS REPORT

Note: If you answer 'yes' to any of the questions below, you must attach a separate sheet providing an explanation and details for each 'yes' response. Please review RRF-1 instructions for information required.

	Yes	No
1 During this reporting period, were there any contracts, loans, leases or other financial transactions between the organization and any officer, director or trustee thereof either directly or with an entity in which any such officer, director or trustee had any financial interest?	<input type="checkbox"/>	<input checked="" type="checkbox"/>
2 During this reporting period, was there any theft, embezzlement, diversion or misuse of the organization's charitable property or funds?	<input type="checkbox"/>	<input checked="" type="checkbox"/>
3 During this reporting period, did non-program expenditures exceed 50% of gross revenues?	<input type="checkbox"/>	<input checked="" type="checkbox"/>
4 During this reporting period, were any organization funds used to pay any penalty, fine or judgment? If you filed a Form 4720 with the Internal Revenue Service, attach a copy.	<input type="checkbox"/>	<input checked="" type="checkbox"/>
5 During this reporting period, were the services of a commercial fundraiser or fundraising counsel for charitable purposes used? If 'yes,' provide an attachment listing the name, address, and telephone number of the service provider. SEE STATEMENT 1	<input checked="" type="checkbox"/>	<input type="checkbox"/>
6 During this reporting period, did the organization receive any governmental funding? If so, provide an attachment listing the name of the agency, mailing address, contact person, and telephone number. SEE STATEMENT 2	<input checked="" type="checkbox"/>	<input type="checkbox"/>
7 During this reporting period, did the organization hold a raffle for charitable purposes? If 'yes,' provide an attachment indicating the number of raffles and the date(s) they occurred. SEE STATEMENT 3	<input checked="" type="checkbox"/>	<input type="checkbox"/>
8 Does the organization conduct a vehicle donation program? If 'yes,' provide an attachment indicating whether the program is operated by the charity or whether the organization contracts with a commercial fundraiser for charitable purposes.	<input type="checkbox"/>	<input checked="" type="checkbox"/>
9 Did your organization have prepared an audited financial statement in accordance with generally accepted accounting principles for this reporting period?	<input checked="" type="checkbox"/>	<input type="checkbox"/>

Organization's area code and telephone number 510-587-9696
 Organization's e-mail address ADMIN@TRANSGENDERLAWCENTER.ORG

I declare under penalty of perjury that I have examined this report, including accompanying documents, and to the best of my knowledge and belief, it is true, correct and complete.

KRIS HAYASHI <small>Signature of authorized officer</small>	EXECUTIVE DIRECTOR <small>Title</small>	
<small>Printed Name</small>	<small>Date</small>	

Statement 1
Form RRF-1, Part B, Line 5
Fundraisers Used

Leslie Ann Minot: 9724 Peacock Hill Circle Las Vegas, NV 89117 (702) 360-7875;
Bing Consulting: P.O. Box 31345 San Francisco, CA 94131 (415) 800-8127

Statement 2
Form RRF-1, Part B, Line 6
Government Agency That Provided Funding

City & County of San Francisco Human Services Agency: PO Box 7988 San Francisco,
CA 94120-7988 (415) 557-5000

Statement 3
Form RRF-1, Part B, Line 7
Number and Dates of Raffles

1 raffle on 10/19/17